



REVISED STARTING
SERIAL # 210310009

PARTS LIST MANUAL MODEL TG10



10" TURBO GRINDERS

SKU #	MODEL #	POWER OPTION
56600	TG10-11H	HONDA GASOLINE ENGINE MODEL GXV340
56700	TG10-13P	HONDA PROPANE ENGINE MODEL GXV390 12V ELEC. START
56900	TG10-5B/230/1	BALDOR ELECTRIC MOTOR 5HP 1PH 60Hz 230V
56800-230	TG10-5B/230/3	BALDOR ELECTRIC MOTOR 5HP 3PH 60Hz 230V
56800-460	TG10-5B/460/3	BALDOR ELECTRIC MOTOR 5HP 3PH 60Hz 460V
56800-50/220	TG10-5B/50/220/3	BALDOR ELECTRIC MOTOR 5HP 3PH 50Hz 220V
56800-50/380	TG10-5B/50/380/3	BALDOR ELECTRIC MOTOR 5HP 3PH 50Hz 380V
56800-50/440	TG10-5B/50/440/3	BALDOR ELECTRIC MOTOR 5HP 3PH 50Hz 440V

**READ AND UNDERSTAND THE OPERATOR'S SAFETY MANUAL THOROUGHLY
BEFORE ATTEMPTING TO OPERATE THIS EQUIPMENT.**

Death or serious injury could occur if this machine is used improperly.

Machine specific Operator's Instruction Manuals are offered at edcoinc.com/customer-resources/manuals-parts-lists/
READ AND UNDERSTAND THE ENGINE MANUFACTURERS INSTRUCTIONS AND OPERATORS MANUAL BEFORE OPERATION.



EQUIPMENT DEVELOPMENT COMPANY, INC.

100 Thomas Johnson Drive, Frederick, MD 21702-4600 USA

Phone: 800-638-3326 or 301-663-1600 • Fax: 800-447-3326 or 301-663-1607

Website: www.edcoinc.com • E-mail: techsupport@edcoinc.com

Printed in USA
JWA ©2021

**SAFETY INFORMATION****SAFETY MESSAGES**

• Safety Instructions are preceded by a graphic alert symbol of DANGER, WARNING, or CAUTION.



Indicates an imminent hazard which, if not avoided, will result in death or serious injury.



Indicates an imminent hazard which, if not avoided, can result in death or serious injury.



Indicates hazards which, if not avoided, could result in serious injury and or damage to the equipment.

GASOLINE / PROPANE POWERED EQUIPMENT

• Engine exhaust from this product contains chemicals known to the State of California to cause cancer, birth defects or other reproductive harm.



• Tilting a gasoline powered machine fitted with an EPA approved vented charcoal filter gas cap, beyond 20° can cause fuel leakage. If a leak occurs, do not start or run the engine until the leak is fixed. Eliminate all other ignition sources in the immediate area (no smoking, flares, sparks or flames). Use approved gasoline absorbing material to contain the fuel leakage. Then use clean, non-sparking tools to collect absorbed materials then dispose of these contaminants properly.



• Gasoline is extremely flammable and poisonous. It should only be dispensed in well ventilated areas, and with a cool engine.

• Small gasoline engines produce high concentrations of carbon monoxide (CO) example: a 5 HP 4 cycle engine operation in an enclosed 100,000 cu. ft. area with only one change of air per hour is capable of providing deadly concentrations of CO in less than fifteen minutes. Five changes of air in the same area will produce noxious fumes in less than 30 minutes. Gasoline powered equipment should not be used in enclosed or partially enclosed areas. Symptoms of CO poisoning include, head-ache, nausea, weakness, dizziness, visual problems and loss of consciousness. If symptoms occur - get into fresh air and seek medical attention immediately.

- Never refuel a hot engine or an engine while it is running.
- Engines are shipped from factory without fuel/oil.



• Propane is extremely flammable and is heavier than air and tends to settle in low areas where a spark or flame could ignite gas. DO NOT start or operate this propane engine in a poorly ventilated area where leaking propane gas could accumulate and endanger safety of persons in area. If headache develops, shut off machine. Have it checked for carbon monoxide emissions by a qualified technician before using it again. To ensure personal safety, installation and repair of propane fuel supply systems must be performed only by qualified technicians. Carbon monoxide emissions from this machine are greatly increased due to a dirty combustion air cleaner.

ELECTRICAL POWERED EQUIPMENT

Extreme care must be taken when operating electric models with water present: Ensure power cord is properly grounded, is attached to a Ground-Fault-Interrupter (GFI) outlet, and is undamaged.

- Check all electrical cables - be sure connections are tight and cable is continuous and in good condition. Be sure cable is correctly rated for both the operating current and voltage of this equipment.
- Improper connection of the equipment grounding conductor can result in a risk of electric shock. Check with qualified electrician or service person if there is any doubt as to whether the outlet is properly grounded. Adhere to all local codes and ordinances.
- NOTE: In the event of a malfunction or breakdown, grounding provides a path of least resistance for the electric current to dissipate. The motor is equipped with a grounded plug and must be connected to an outlet that is properly installed and properly grounded. DO NOT modify the plug provided on the motor. If the plug does not fit the outlet have a qualified electrician install the proper receptacle.

ELECTRICAL POWERED EQUIPMENT CONTINUED

- Do not disconnect power by pulling cord. To disconnect, grasp the plug, not the cord.
- Unplug power cord at the machine when not in use and before servicing.
- Switch motor OFF before disconnecting power.
- Never use frayed, damaged, taped or under rated extension cords. Electrical shock could result in death or serious injury to the operator and damage to the equipment.
- Assure you are using the proper extension cord length.

GENERAL INSTRUCTIONS

- Equipment should only be operated by trained personnel in good physical condition and mental health (not fatigued). The operator and maintenance personnel must be physically able to handle the bulk weight and power of this equipment.
- This is a one person tool. Maintain a safe operating distance to other personnel. It is the operators' responsibility to keep other people (workers, pedestrians, bystanders, etc.) away during operation. Block off the work area in all directions with roping, safety netting, etc. Failure to do so may result in others being injured by flying debris or exposing them to harmful dust and noise.
- This equipment is intended for commercial use only.
- For the operator's safety and the safety of others, always keep all guards in place during operation.
- Never let equipment run unattended.



- Personal Protection Equipment and proper safety attire must be worn when operating this machinery. The operator must wear approved safety equipment appropriate for the job such as hard hat and safety shoes when conditions require. Hearing protection **MUST** be used when operational noise levels of this equipment may exceed 85db. Eye protection **MUST** be worn at all times.



Keep body parts, loose clothing and accessories away from moving parts. Failure to do so could result in dismemberment or death.

- Do not modify the machine.
- Stop motor/engine when adjusting or servicing this equipment. Maintain a safe operating distance from flammable materials. Sparks from the cutting-action of this machine can ignite flammable materials or vapors.

**DUST WARNING**

Some dust created by power sanding, sawing, grinding, drilling, and other construction activities contains chemicals known to cause cancer, birth defects, or other reproductive harm. Materials being removed can be toxic or hazardous. A breathing respirator is required to help protect the operator. Some examples of these chemicals are:

- Lead from lead-based paints.
- Crystalline silica from bricks, concrete and other masonry products. Your risk of exposure to these chemicals varies depending on how often you do this type of work. To reduce your risk: work in a well ventilated area, use a dust control system, such as an industrial-style vacuum, and wear approved personal safety equipment, such as a dust/particle respirator designed to filter out microscopic particles.
- See more on the importance of dust prevention and silica warnings at: osha.gov/silica
- More concrete and silica dust suppression training and educational materials available at edcoinc.com/silica-standards or scan the QR code on page 5.
- Written exposure plans are provided at <http://www.edcoinc.com/written-exposure-control-plans/>

PARTS LIST MANUAL

MODEL TG10

10" TURBO GRINDERS

E-TG10-PL-0321

TABLE OF CONTENTS

<u>Section</u>	<u>Page Number</u>
Safety Information	2
How To Order Replacement Parts	3
Illustration 1: Main Grouping	4, 5
Illustration 2: Leveling System Grouping	6
Illustration 3: Water Valve Grouping	7
Illustration 4: Head Assembly with Bearing	8
Illustration 5: Bearing Hub Assembly	9
Illustration 6: Rigid Head Assembly (Standard)	10
Illustration 7: Flex Head Assembly (Optional)	11
Illustration 8: Optional Ball Caster Depth Stop Kit	12
Illustration 9: Optional Lifting Bail Assembly	13
Illustration 10: Gasoline Engine & Belt Drive Grouping	14, 15
Illustration 11: Propane Engine & Belt Drive Grouping	16, 17
Illustration 12: Propane Engine, Regulator & Battery Grouping	18, 19
Illustration 13: Propane Engine Grouping	20, 21
Illustration 14: Propane Tank Grouping	22, 23
Illustration 15: Single-Phase Motor & Belt Drive Grouping	24, 25
Illustration 16: Three-Phase Motor & Belt Drive Grouping	26, 27
Illustration 17: Starter Assembly	28
Wiring Diagram for Gasoline Model	30
Wiring Diagram for Propane Model	31
Wiring Diagram for Rotary Cam Switch (Single Phase)	32
Wiring Diagram for Starter (Three Phase)	33
Wiring Diagram for 1 Phase 60 Hz Motor - Baldor L3608TM	34
Wiring Diagram for 3 Phase 60 Hz Motor - Baldor EM3613T	35
Wiring Diagram for 3 Phase 50 Hz Motor - Baldor M3613T-57	35
Decal Sheet	36
Decals Continued	37
Limited Equipment Warranty of Sale	39
STOP - Before Using This Product	40

HOW TO ORDER REPLACEMENT PARTS

- ☐ To insure product safety and reliability, always use genuine EDCO replacement parts when making repairs to the equipment.
- ☐ When calling for parts, specify the MODEL and SERIAL number of the machine, which can be found on the NAME PLATE. Keep that information in the space provided. In addition to this information, give part number, description, and quantity as listed on the parts list to your parts representative.
- ☐ Please note: Due to improvements and changes in the equipment, the illustrations shown may be different than the actual machine.

FILL IN INFORMATION BELOW

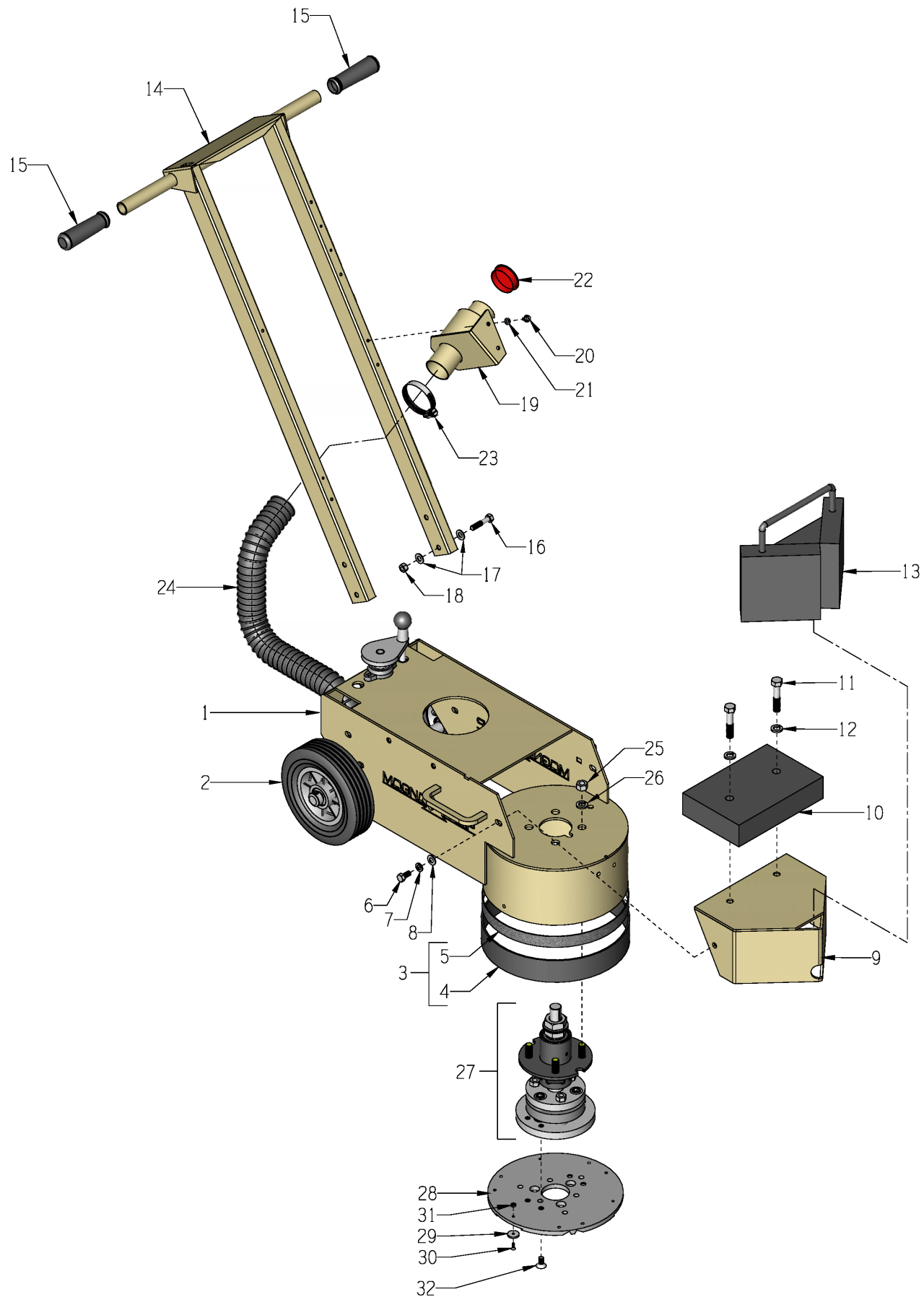
Date of Purchase _____

Model # _____

Serial # _____

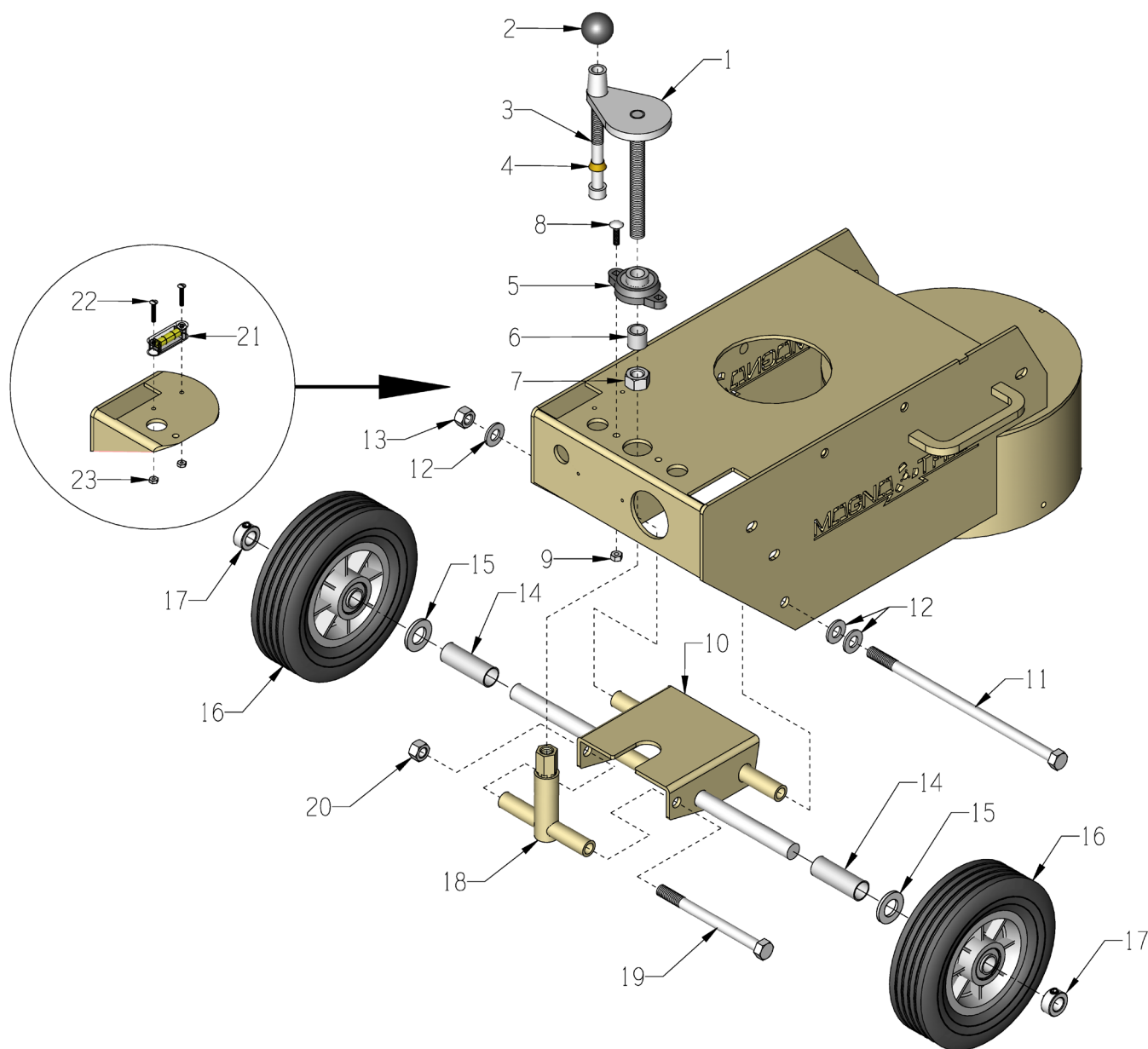
SKU # _____

ILLUSTRATION 1: MAIN GROUPING



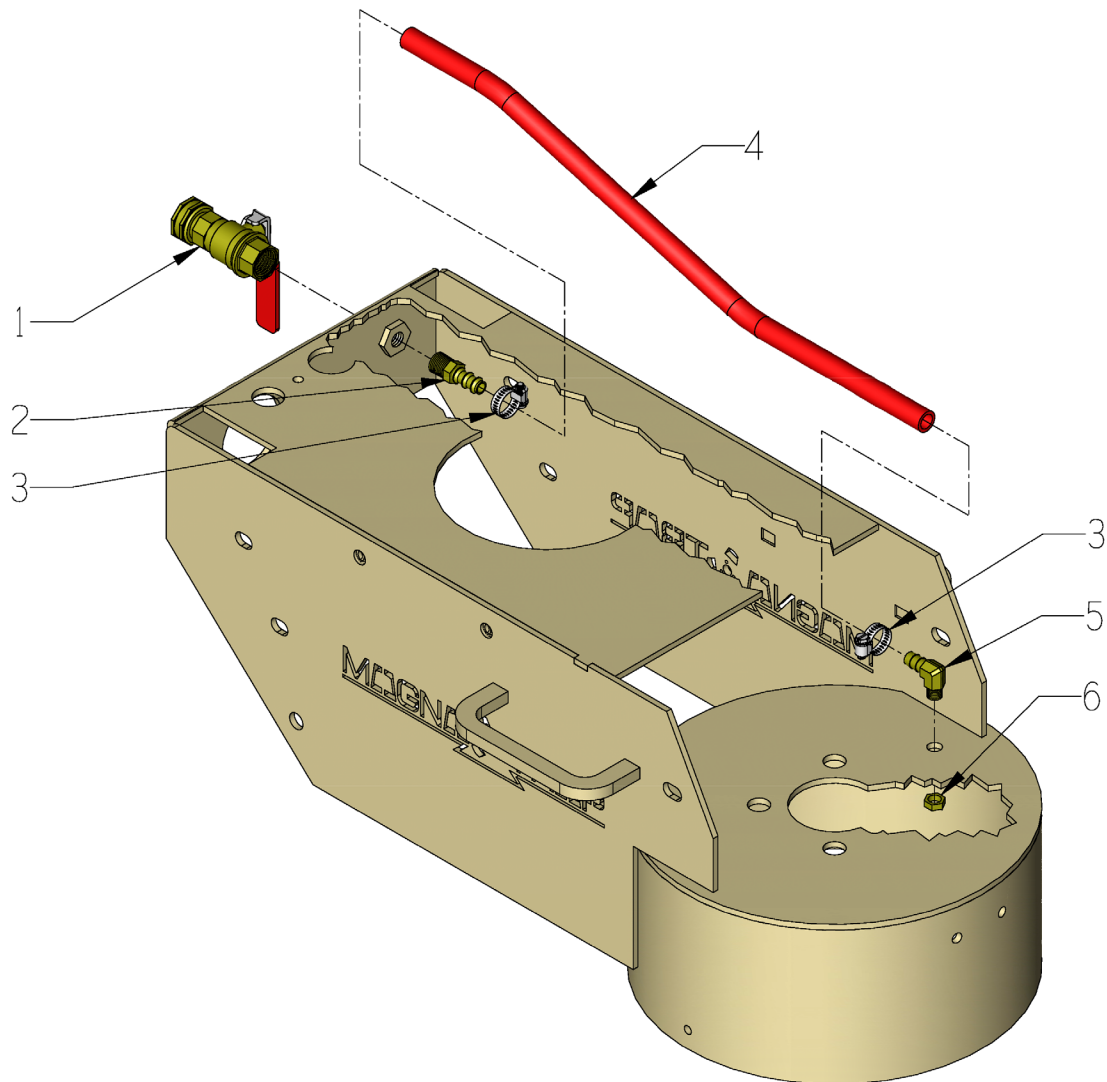
PARTS LISTING - ILLUSTRATION 1: MAIN GROUPING			
ITEM #	PART #	DESCRIPTION	QTY.
1	86701	MAIN FRAME, TG-10	1
2	- - - - -	LEVELING SYSTEM (REFER TO ILLUS. 2 FOR BREAKDOWN)	-
3	86426K	RUBBER SKIRT W/ VELCRO LOOP & HOOK (INCLUDES ITEMS 4 & 5 TOGETHER)	1
4	86426	RUBBER SKIRT W/ VELCRO-LOOP 39-1/8" NOTE: CUT TO 36"	1
5	86427	VELCRO-HOOK ONLY, 1" X 39" (TRIMMED TO SIZE) NOTE: THIS PIECE IS PLACED AROUND THE BOTTOM EDGE OF THE SHROUD. USE CONTACT CEMENT.	1
6	10907	SCREW, CAP 3/8-16 X 3/4	2
7	10811	WASHER, LOCK 3/8 ZINC	2
8	10025	WASHER, FLAT 3/8 SAE ZINC	2
9	86303	HOOD, TG10	1
10	86345	WEIGHT BLOCK, 30 LB. (ELECTRIC MODELS ONLY)	1
11	10323	SCREW, CAP 1/2-13 X 2-1/2	2
12	10045	WASHER, LOCK 1/2 ZINC	2
13	86340	WEIGHT, 30 LB., TG10 (OPTIONAL)	1
14	86304	HANDLE BAR, TG10	1
15	10608	GRIP, HAND 1" MODEL AT	2
16	10029	SCREW, CAP 3/8-24 X 1-3/4	4
17	10025	WASHER, FLAT 3/8 SAE ZINC	8
18	10058	NUT, HEX LOCK 3/8-24 W/ NYLON PATCH	4
19	86347	BRACKET, MULTI-VAC PORT 2-3"	1
20	10846	SCREW, CAP STSHW 1/4-20 X 5/8	2
21	10038	WASHER, LOCK 1/4 ZINC	2
22	65021	CAP/PLUG 2" RED PLASTIC, FLANGED	1
23	10766	CLAMP, HOSE, SAE #32, ADJ. TO 2-1/2	2
24	77113	HOSE, FLEX 2"ID X 32"L	1
25	10072	NUT, HEX 1/2-20 ZINC	4
26	10045	WASHER, LOCK 1/2 ZINC	4
27	86333... 86326...	HEAD ASSEMBLY COMPLETE W/ BEARING HUB* ...RIGID STYLE ...FLEXIBLE STYLE *NOTE: REFER TO ILLUS. 4,5, 6, AND 7 FOR BREAKDOWNS.	1
28	100054	10" UNIVERSAL MAGNA-TRAP DISC	1
29	36064	MAGNET, NEODYMIUM RING 7/8 X 1/8 (REPLACEMENT - USE HARDWARE, ITEMS 30 & 31)	3
30	10647	SCREW, FLAT HD PHILLIPS 8-32 X 1/2	3
31	10462	NUT, KEPS LOCK 8-32 ZINC	3
32	86108	SCREW, FLAT HD SKT 3/8-24 X 3/4	4

ILLUSTRATION 2: LEVELING SYSTEM GROUPING



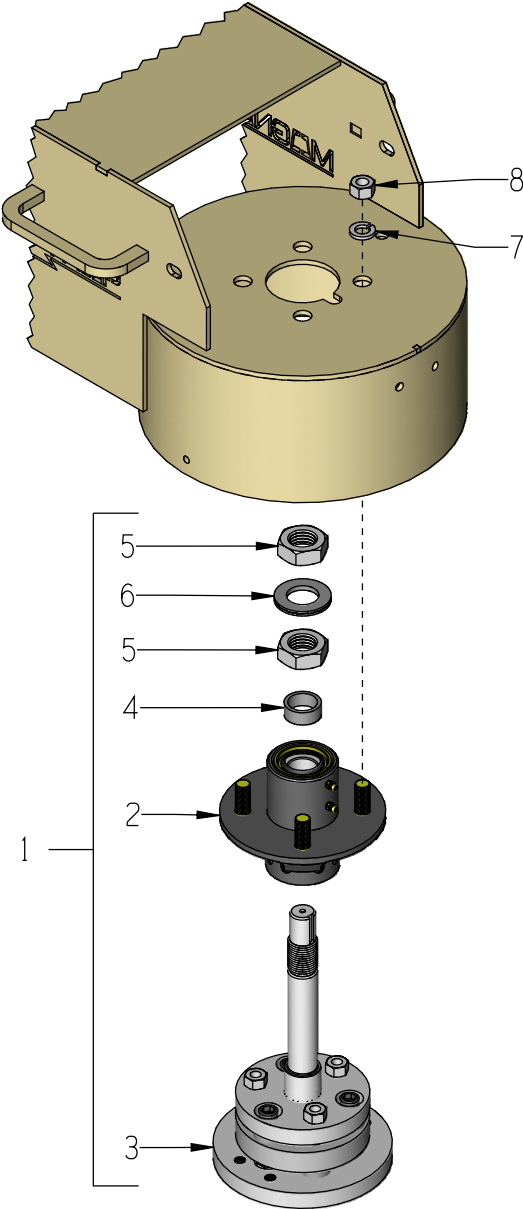
ITEM #	PART #	DESCRIPTION	QTY.	ITEM #	PART #	DESCRIPTION	QTY.
1	86905	KNOB, WHEEL HEIGHT CONTROL	1	13	10407	NUT, HEX LOCK 1/2-13 ZINC	1
2	14023	KNOB, BALL 1-3/8 W/ 1/2-13THD,	1	14	86705	WHEEL SPACER, SECNG TG10	2
3	10411	SCREW, SKT. HD. CAP 1/2-13 X 4	1	15	10009	WASHER, FLAT 3/4 SAE ZINC	2
4	50550	SLEEVE, BRASS 1/2" TAPERED	1	16	79013	WHEEL, 8 X 2-1/2 X 3/4"BRG.POLY HUB	2
5	80009	BEARING, BALL 5/8" 2-HOLE	1	17	10428	COLLAR, LOCKING 3/4"ID	2
6	55010	SPACER, HANDWHEEL, 3/4"L	1	18	86904	FORK LINKAGE WELDMENT	1
7	10046	NUT, HEX 5/8-11 ZINC	1	19	10329	SCREW, CAP 1/2-20 X 6	1
8	10412	BOLT, CARRIAGE 1/4-20 X 1	2	20	10205	NUT, HEX LOCK 1/2-20 ZINC	1
9	10861	NUT, KEPS LOCK 1/4-20 ZINC	2	21	59117	LEVEL, SCREW ON	1
10	86702	FORK WELDMENT, SECNG TG10	1	22	11871	SCREW, MACHINE FHP 8-32 X 1-1/4	2
11	10355	SCREW, CAP 1/2-13 X 11	1	23	10462	NUT, KEPS LOCK 8-32 ZINC	2
12	10312	WASHER, FLAT 1/2 SAE ZINC	3				

ILLUSTRATION 3: WATER VALVE GROUPING



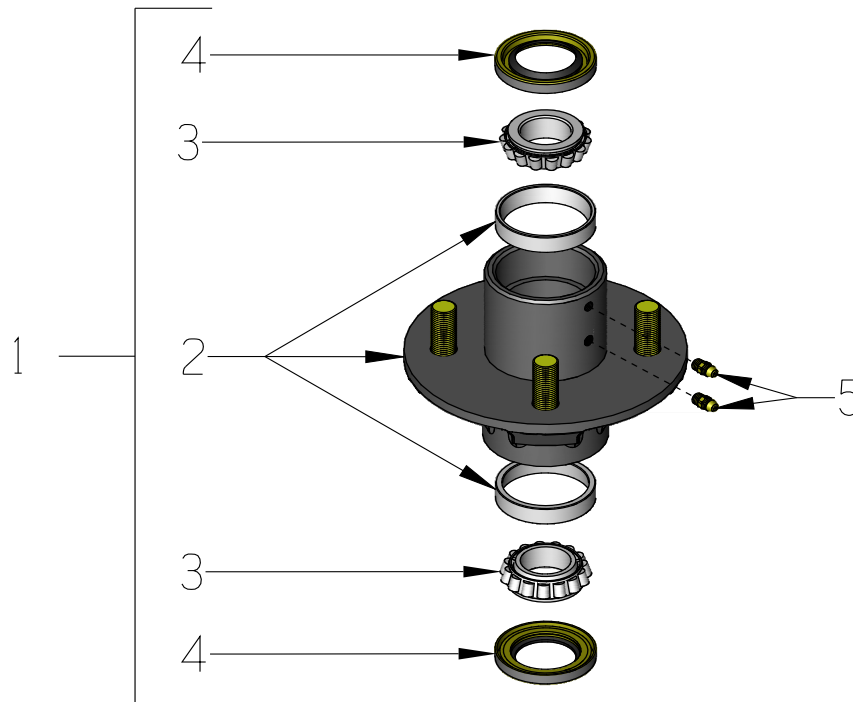
ITEM #	PART #	DESCRIPTION	QTY.
1	10711A	VALVE & HOSE CONNECTOR ASSY.	1
2	50075	BARB, 3/8 HOSE X 1/4MPT (BRASS)	1
3	10714	CLAMP, HOSE, SAE #4, ADJ. TO 5/8"	2
4	86329	HOSE 3/8"ID X 19-1/4"L, TG-10	1
5	11562	BARB ELBOW 90, 3/8HOSE X 1/8MPT	1
6	10864	NUT, HEX PANEL 1/8-27 NPSM ZINC	1

ILLUSTRATION 4: HEAD ASSEMBLY WITH BEARING



ITEM #	PART #	DESCRIPTION	QTY.
1	86333 86326	HEAD ASSEMBLY W/ BEARING ...RIGID STYLE ...FLEXIBLE STYE	1
2	86320A	HUB ASSY. W/ BRGS. & SEALS, TG-10 (SEE ILLUS. 5 FOR BREAKDOWN)	1
3	86333LB 86326LB	HEAD ASSEMBLY LEES BEARING ...RIGID STYLE (SEE ILLUS. 6 FOR BREAKDOWN) ...FLEXIBLE STYE (SEE ILLUS. 7 FOR BREAKDOWN)	1
4	86319	SPACER, HUB BEARING, TG-10 & CPM-10	1
5	50020	NUT, HEX JAM 1-14 ZINC GRADE 8	2
6	86323	WASHER, NORD-LOCK 1" (PAIR)	1
7	10045	WASHER, LOCK 1/2 ZINC	4
8	10072	NUT, HEX 1/2-20 ZINC	4

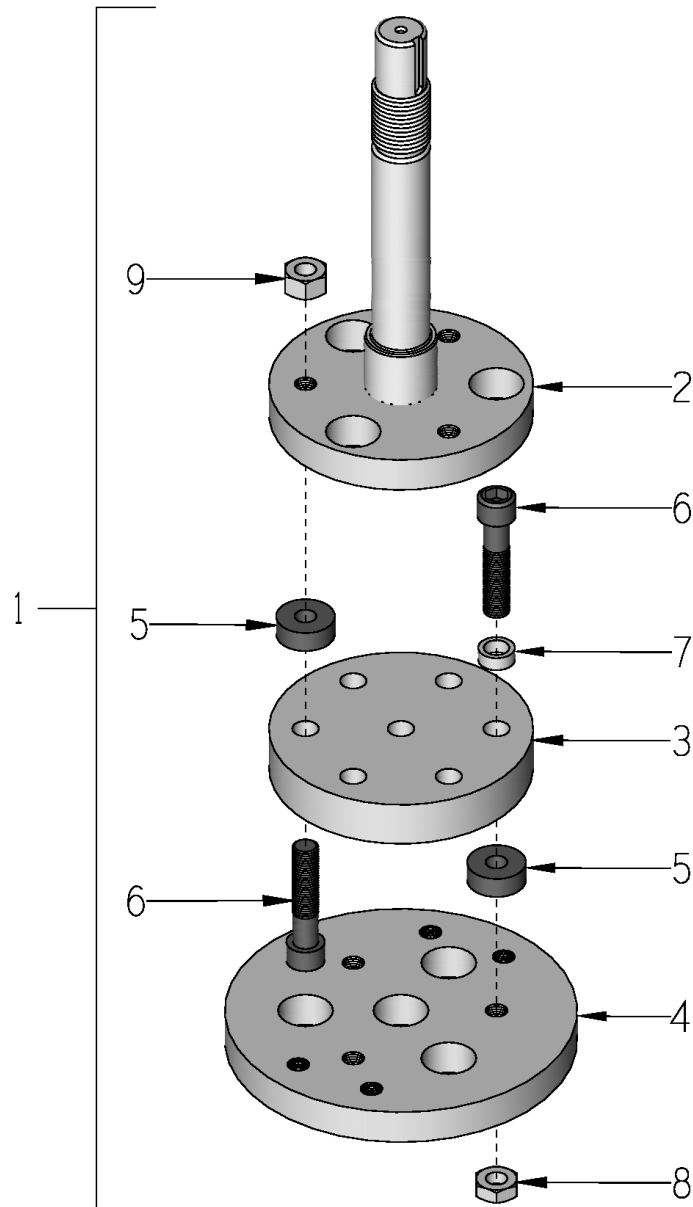
ILLUSTRATION 5: BEARING HUB ASSEMBLY



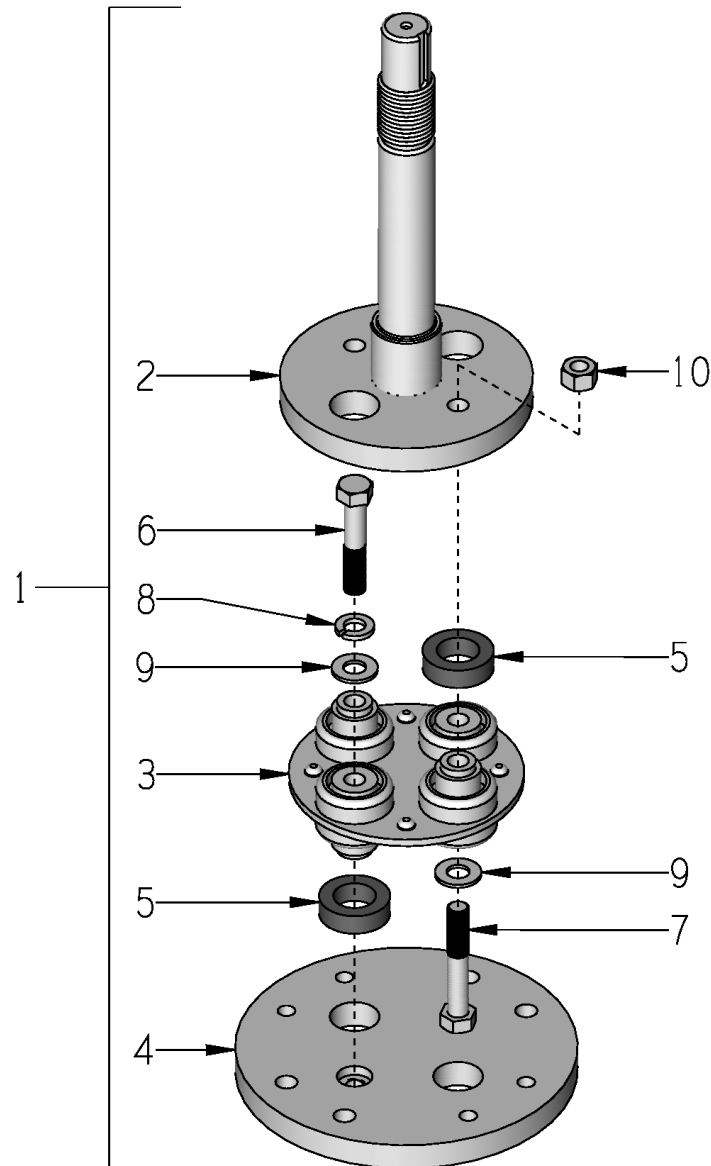
NOTE: USE LUBRIPLATE 930-AA HIGH TEMPERATURE GREASE OR EQUIVALENT.

ITEM #	PART #	DESCRIPTION	QTY.
1	86320A	HUB ASSY. W/ BRGS. & SEALS, TG-10	1
2	86320HG	HUB W/ RACE CUPS & GREASE HOLES	1
	86339	BEARING CUP RACE L44610 (REPLACEMENT ONLY) NOTE: BEARING CUP RACES ARE PRESSED IN HUB	2
3	86321	BEARING, TAPERED ROLLER 1"ID CONE	2
4	86322	SEAL, BEARING HUB, 1.25 X 1.983	2
5	10808	FITTING, GREASE 1/4-28 STRAIGHT	2

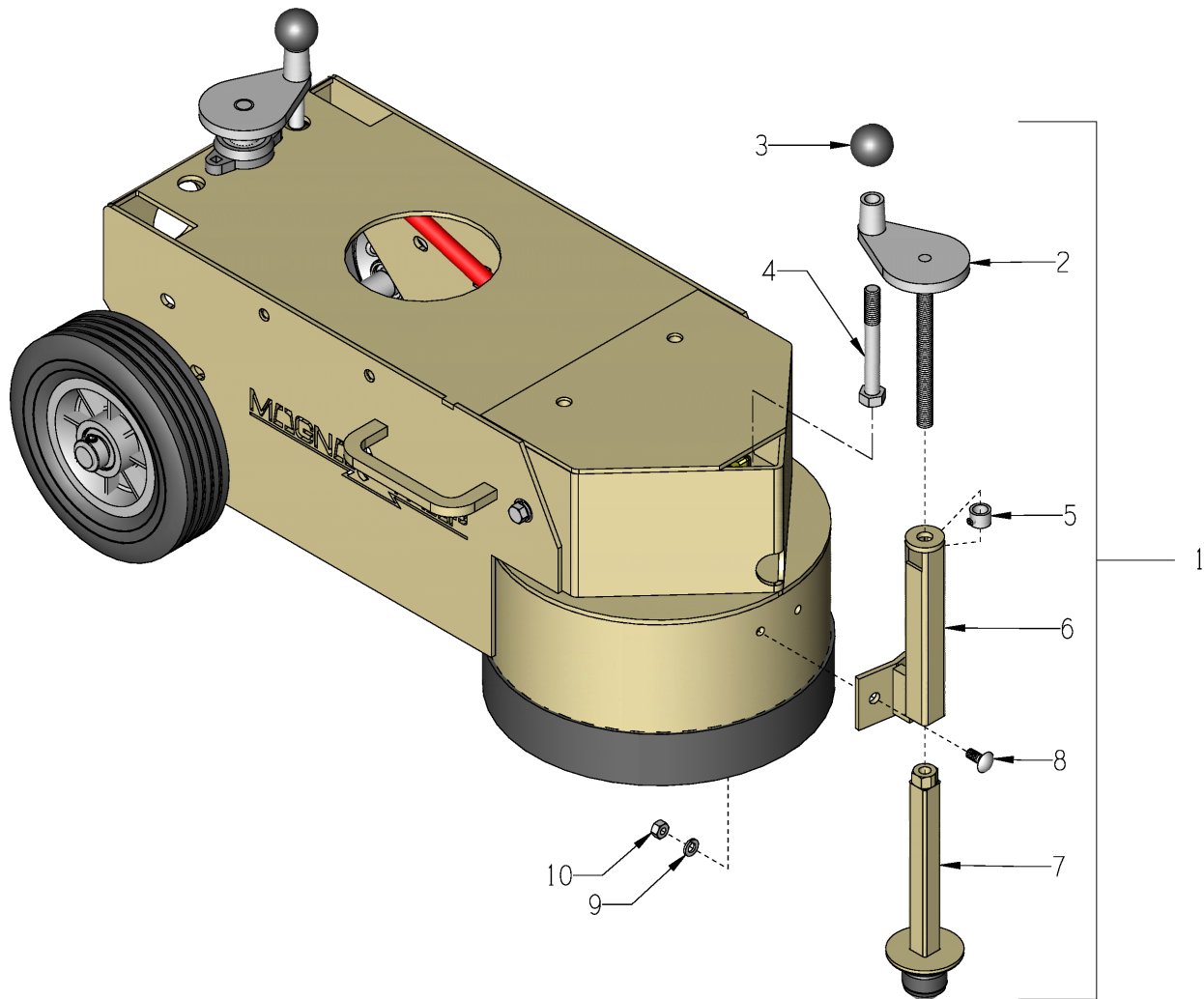
ILLUSTRATION 6: RIGID HEAD ASSEMBLY (STANDARD)



ITEM #	PART #	DESCRIPTION	QTY.
1	86333LB	HEAD ASSY. LESS BRG., RIGID (INCLUDES ITEMS 2-9)	1
2	86334	FLANGE W/ SHAFT, RIGID HEAD, TG10	1
3	86132S	SPACER, RIGID HEAD, STEEL	1
4	86133	MOUNTING DISC, RIGID HEAD	1
5	40329	BUSHING, RUBBER 1"OD X 3/8"ID X 3/8	6
6	86111	SCREW, SKT. HD. CAP 7/16-20 X 2 GR8	6
7	86112	SPACER, STL 5/8"OD X 7/16ID X 1/4TK	3
8	11641	NUT, HEX JAM 7/16-20 ZINC (USE RED LOCTITE)	3
9	10481	NUT, HEX 7/16-20 ZINC (USE RED LOCTITE)	3

ILLUSTRATION 7: FLEX HEAD ASSEMBLY (OPTIONAL)


ITEM #	PART #	DESCRIPTION	QTY.
1	86326LB	HEAD ASSY. LESS BRG., FLEX (INCLUDES ITEMS 2-10)	1
2	86308	FLANGE W/ SHAFT, FLEX HEAD, TG10	1
3	86017	COUPLING, MORFLEX 402 CENTER	1
4	86309	MOUNTING DISC, FLEXIBLE HEAD	1
5	86343	BUSHING, RUBBER 1-1/4 X 3/4 X 3/8	4
6	10030	SCREW, CAP 3/8-24 X 2 (USE RED LOCTITE)	2
7	10336	SCREW, CAP 3/8-24 X 2-1/4	2
8	10811	WASHER, LOCK 3/8 ZINC	2
9	10025	WASHER, FLAT 3/8 SAE ZINC	4
10	10004	NUT, HEX LOCK 3/8-24 ZINC	2

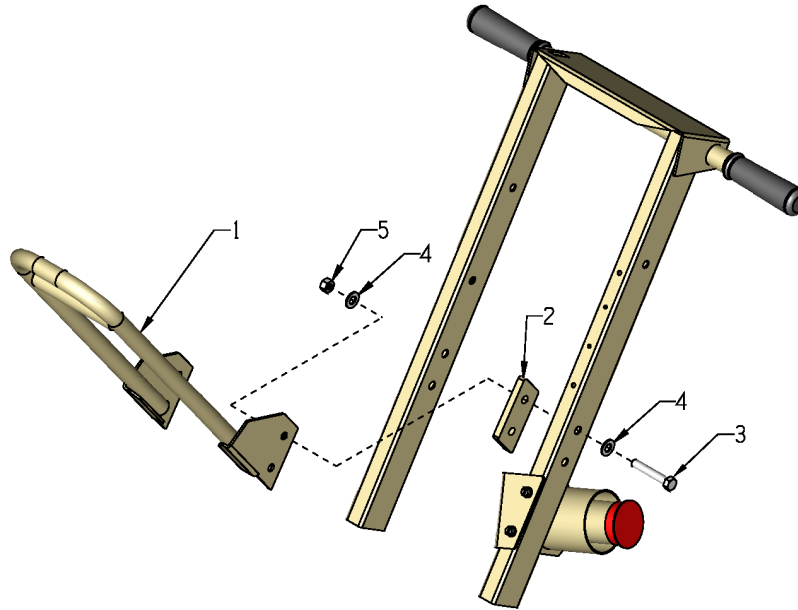
ILLUSTRATION 8: OPTIONAL BALL CASTER DEPTH STOP KIT


ITEM #	PART #	DESCRIPTION	QTY.
1	86330	BALL CASTER DEPTH STOP KIT, TG10 (INCLUDES ITEMS 2 THRU 10)	1
2	86313	HANDWHEEL, SMALL W/ ROD, TG10	1
3	10104	KNOB, BALL 1-7/8 W/ 1/2-13THD, BLK.	1
4	81001	SCREW, CAP 1/2-13 X 4	1
5	86316	COLLAR, LOCKING 1/2", TG10	1
6	86314	SUPPORT, DEPTH STOP, TG10	1
7	86315	BALL-CASTER WELDMENT, TG10	1
8	10818	BOLT, CARRIAGE 5/16-18 X 3/4	2
9	10801	WASHER, LOCK 5/16 ZINC	2
10	10054	NUT, HEX 5/16-18 ZINC	2

ILLUSTRATION 9: OPTIONAL LIFTING BAIL ASSEMBLY PART # 65096A2

E-TG10-PL-0321

NOTE: NOT AVAILABLE FOR PROPANE MODEL



ITEM #	PART #	DESCRIPTION	QTY.
1	65096	BAIL ONLY, LIFTING, TG10	1
2	86714	SHIM 3/8", LIFTING BAIL, TG10	2
6	10336	SCREW, CAP 3/8-24 X 2-1/4	4
3	10025	WASHER, FLAT 3/8 SAE ZINC	8
4	10058	NUT, HEX LOCK 3/8-24 W/ NYLON PATCH	4

INSTRUCTIONS FOR MOUNTING LIFTING BAIL

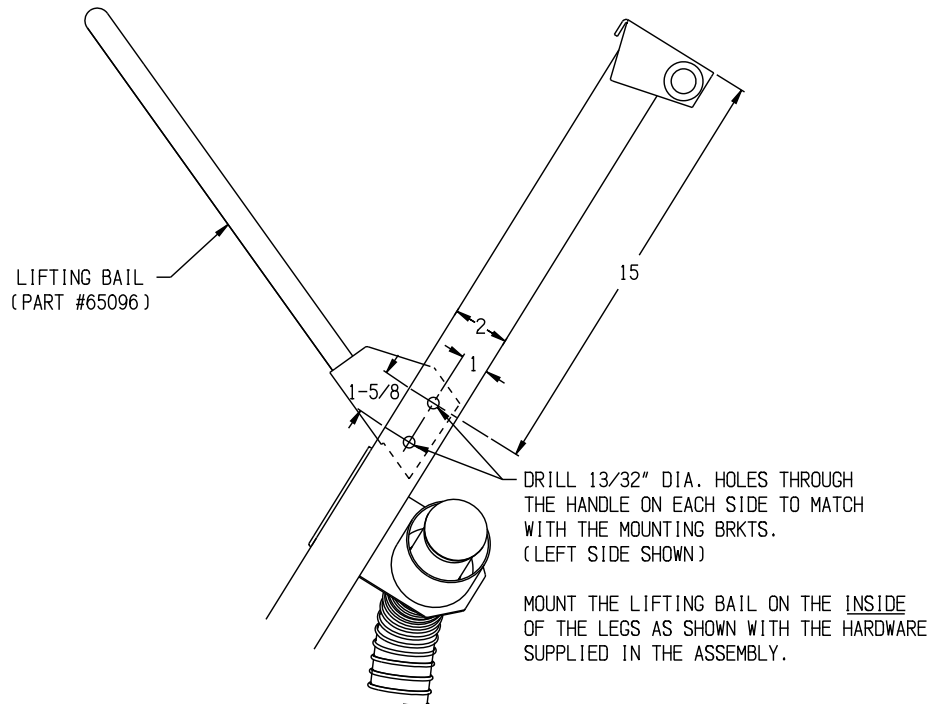
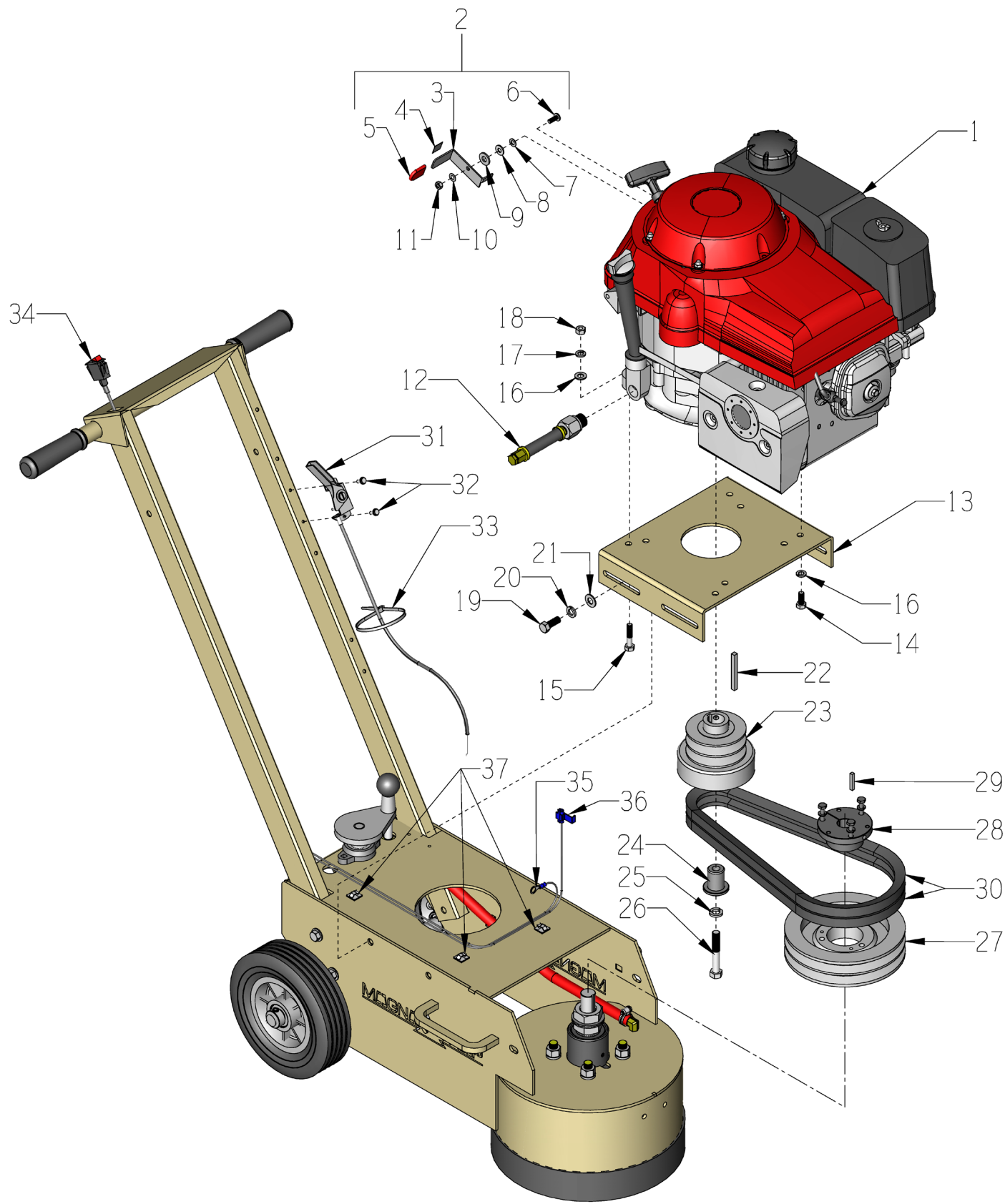


ILLUSTRATION 10: GASOLINE ENGINE & BELT DRIVE GROUPING

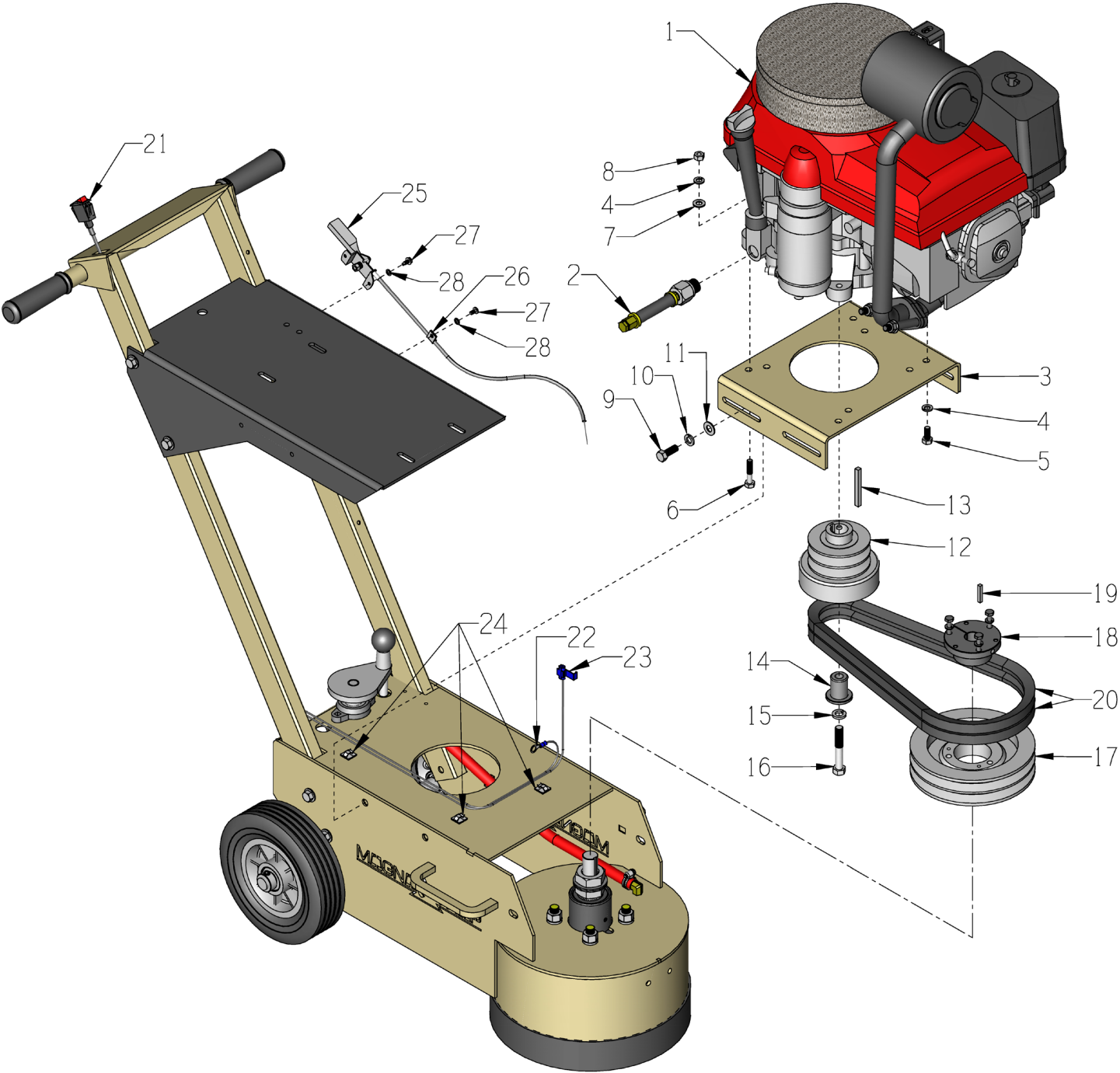


PARTS LISTING - ILLUSTRATION 10: GASOLINE ENGINE & BELT DRIVE GROUPING

ITEM #	PART #	DESCRIPTION	QTY.
1	76004	ENGINE, HONDA MODEL GXV340UT2-DX3	1
2	15190	MANUAL CHOKE KIT FOR HONDA GXV340 (INCLUDES ITEMS 3 THRU 11)	1
3	15183	LEVER, CHOKE CONTROL, GXV340	1
4	91301	DECAL, CHOKE 5/8 X 5/8	1
5	15184	CAP, FLAT RED .062 X .75 X 1	1
6	15185	SCREW, MACHINE M6 X 16MM PHILLIP HD	1
7	15188	WASHER .265"ID, .50"OD, .029-.035"THK	1
8	10602	WASHER, FLAT 1/4 SAE ZINC	1
9	15187	WASHER, FIBER .75 X .25 X .093	1
10	15186	WASHER, BELLEVILLE .500 X.255 X.018	1
11	28026	NUT, HEX NYLON LOCK M6 X 1MM	1
12	11572	OIL DRAIN KIT, 11/13 HP HONDA VERT.	1
13	86311	MOUNT, ENGINE, TG10 & TMC7	1
14	10048	SCREW, CAP 5/16-24 X 3/4	2
15	10342	SCREW, CAP 5/16-18 X 1-1/2	2
16	10213	WASHER, FLAT 5/16 SAE ZINC	2
17	10801	WASHER, LOCK 5/16 ZINC	4
18	10054	NUT, HEX 5/16-18 ZINC	2
19	10055	SCREW, CAP 3/8-16 X 1	4
20	10811	WASHER, LOCK 3/8 ZINC	4
21	10025	WASHER, FLAT 3/8 SAE ZINC	4
20	10071	KEY 1/4SQ X 2-1/2	1
23	76024	CLUTCH, CENTRIFUGAL 3.5 X 2GR X 1	1
24	86706	CLUTCH PLUG, TG-10	1
25	10450	WASHER, LOCK 7/16 ZINC	1
26	11750	SCREW, CAP 7/16-20 X 2-3/4 ZINC	1
27	75010	SHEAVE 6.9"OD X 2GR.B X SDS	1
28	10081M	BUSHING, SHEAVE SDS X 7/8 MODIFIED (COUNTER BORED)	1
29	50523	KEY 3/16SQ X 1-1/8	1
30	10290	BELT B-35	2
31	40388	CABLE, THROTTLE, LEVER-TYPE 24"	1
32	10877	SCREW, CAP STSHW 10-24 X 1/2	2
33	10982	TIE, CABLE, BLACK NYLON 11-1/4"	1
34	15201A	SWITCH W/ WIRES, ROCKER RED ON-OFF	1
35	50084	TERM., RING #10 16-14GA. INSULATED	1
36	10970	CONN., WIRE QUICK-SPLICE 18-14 GA.	1
37	36042	ADHESIVE CORD CLIP 5/8"SQ.	3

MODEL TG10-13P

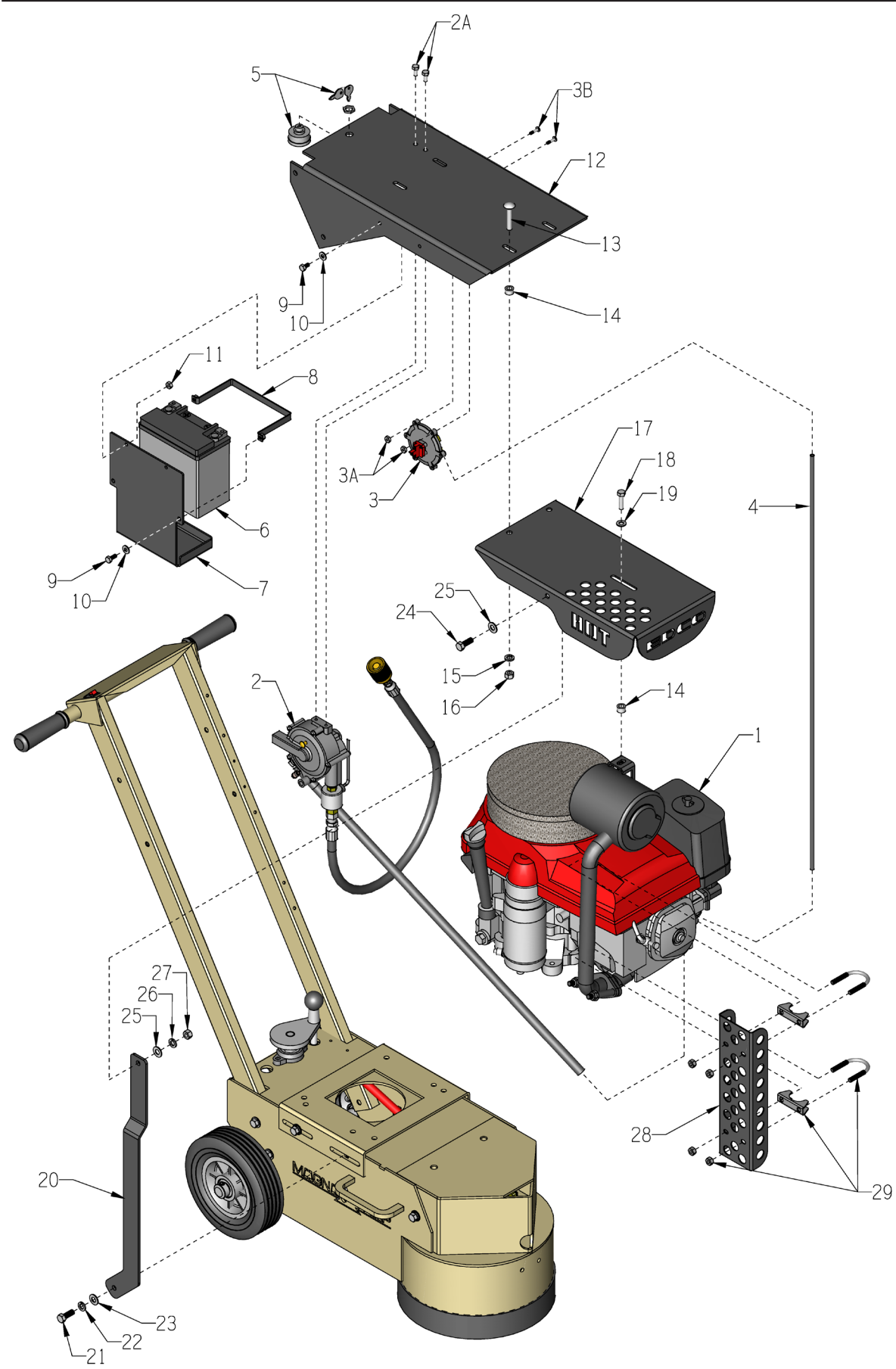
ILLUSTRATION 11: PROPANE ENGINE & BELT DRIVE GROUPING



PARTS LISTING - ILLUSTRATION 11: PROPANE ENGINE & BELT DRIVE GROUPING

ITEM #	PART #	DESCRIPTION	QTY.
1	15088-P	ENGINE, HONDA GXV390 PROPANE AZTEC (ALSO SEE ILLUSTRATIONS 12 & 13)	1
2	11572	OIL DRAIN KIT, 11/13 HP HONDA VERT.	1
3	86311	MOUNT, ENGINE, TG10 & TMC7	1
4	10801	WASHER, LOCK 5/16 ZINC	2
5	10048	SCREW, CAP 5/16-24 X 3/4	2
6	10204	SCREW, CAP 5/16-18 X 1-3/4	2
7	10213	WASHER, FLAT 5/16 SAE ZINC	2
8	10054	NUT, HEX 5/16-18 ZINC	2
9	10333	SCREW, CAP 3/8-16 X 1-1/4	4
10	10811	WASHER, LOCK 3/8 ZINC	4
11	10025	WASHER, FLAT 3/8 SAE ZINC	4
12	76024	CLUTCH, CENTRIFUGAL 3.5 X 2GR X 1	1
13	10071	KEY 1/4SQ X 2-1/2	1
14	86706	CLUTCH PLUG, TG10	1
15	10045	WASHER, LOCK 1/2 ZINC	1
16	11750	SCREW, CAP 7/16-20 X 2-3/4 ZINC	1
17	75010	SHEAVE 6.9"OD X 2GR.B X SDS	1
18	10081M	BUSHING, SHEAVE SDS X 7/8 MODIFIED	1
19	50523	KEY 3/16SQ X 1-1/8	1
20	10290	BELT B-35	2
21	15201A	SWITCH W/ WIRES, ROCKER RED ON-OFF	1
22	50084	TERM., RING #10 16-14GA. INSULATED	1
23	10970	CONN., WIRE QUICK-SPLICE 18-14 GA.	1
24	36042	ADHESIVE CORD CLIP 5/8"SQ.	3
25	40388	CABLE, THROTTLE, LEVER-TYPE 24"	1
26	10941	CLIP, CONDUIT, THROTTLE CABLE	1
27	10877	SCREW, CAP STSHW 10-24 X 1/2	3
28	10831	WASHER, LOCK, INT. TOOTH #10	3

ILLUSTRATION 12: PROPANE ENGINE, REGULATOR & BATTERY GROUPING



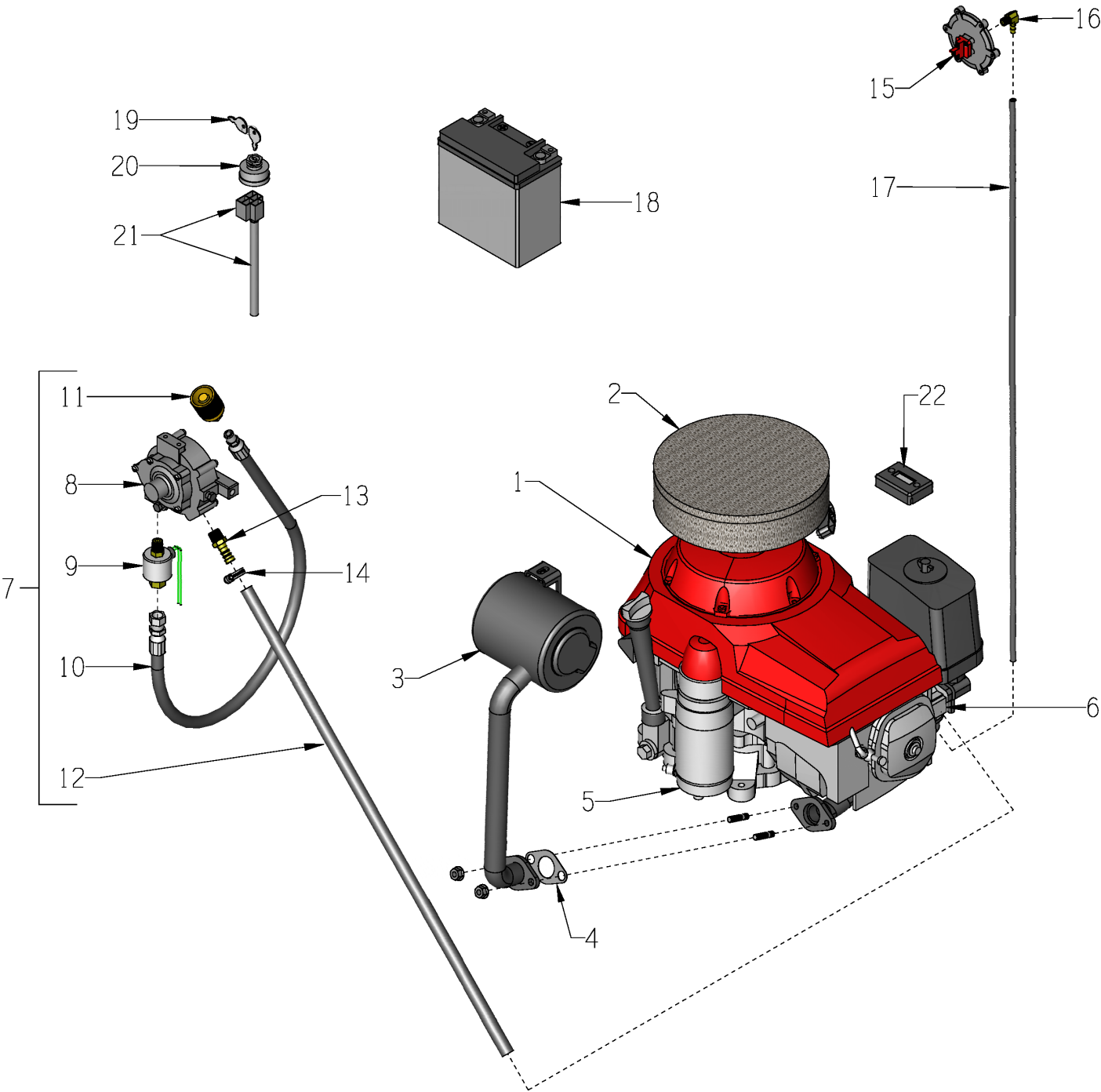
**PARTS LISTING - ILLUSTRATION 12:
PROPANE ENGINE, REGULATOR & BATTERY GROUPING**

ITEM #	PART #	DESCRIPTION	QTY.
1	15088-P	ENGINE, HONDA GXV390 PROPANE (SEE ILLUSTRATION 13) INCLUDES: ENGINE, CARBURETOR ADAPTER, FOAM FILTER, CATALYTIC-MUFFLER, BATTERY, CABLES, STARTER SOLENOID, KEY SWITCH, REGULATOR, HP SHUT-OFF VALVE, MICROVAC SAFETY SWITCH, HOSES, FITTINGS, CLAMPS, AND TACH/HOUR METER.	1
2*	15088-P2	REGULATOR KIT FOR GX390 PROPANE (SEE ILLUS. 13, ITEM 7) INCLUDED W/ ENGINE, ITEM 1	1
2A	N/A	SCREWS (INCLUDED WITH REGULATOR)	2
3*	15088-P3 15088-P10	SWITCH, 12V MICROVAC SAFETY 1501L BARB ELBOW 90, 3/16HOSE X 1/8MPT INCLUDED W/ ENGINE, ITEM 1. (SEE ILLUS. 13, ITEMS 15 & 16.)	1 1
3A	10460	NUT, HEX MACHINE SCREW 10-32 ZINC	2
3B	10384	SCREW, MACHINE 10-32 X 1 RHP	2
4*	15088-P11	VACUUM HOSE 3/16"ID x 39"L INCLUDED W/ ENGINE, ITEM 1. (SEE ILLUS. 13, ITEM 17)	1
5*	15088-P13	SWITCH, KEY, TG10-13P INCLUDED W/ ENGINE, ITEM 1. (SEE ILLUS. 13, ITEM 20)	1
6*	15088-P12	BATTERY 12V, XTREME XTA13-BS INCLUDED W/ ENGINE, ITEM 1. (SEE ILLUS. 13, ITEM 18)	1
7	86709	TRAY, BATTERY, TG10-13P	1
8	86710	STRAP, BATTERY, TG10-13P	1
9	11696	SCREW, FLANGE HEX 1/4-20 X 3/4	4
10	10602	WASHER, FLAT 1/4 SAE ZINC	4
11	10861	NUT, KEPS LOCK 1/4-20 ZINC	2
12	86708	MOUNT, PROPANE TANK, TG10-13P	1
13	10804	BOLT, CARRIAGE 3/8-16 X 1-1/2	2
14	10011	SPACER, STEEL 5/8OD X 3/8ID X 3/8T	3
15	10811	WASHER, LOCK 3/8 ZINC	2
16	10404	NUT, HEX 3/8-16 ZINC	2
17	86711	GUARD, MUFFLER, TG10-13P	1
18	10606	SCREW, CAP 5/16-18 X 1-1/4	1
19	10213	WASHER, FLAT 5/16 SAE ZINC	1
20	86712	GUARD SUPPORT, MUFFLER, TG10-13P	1
21	10333	SCREW, CAP 3/8-16 X 1-1/4	1
22	10811	WASHER, LOCK 3/8 ZINC	1
23	10025	WASHER, FLAT 3/8 SAE ZINC	1
24	10055	SCREW, CAP 3/8-16 X 1	1
25	10025	WASHER, FLAT 3/8 SAE ZINC	2
26	10811	WASHER, LOCK 3/8 ZINC	1
27	10404	NUT, HEX 3/8-16 ZINC	1
28	86713	HEAT SHIELD, EXHAUST PIPE, TG10-13P	1
29	86374	CLAMP, EXHAUST 5/16 X 1-1/4	2

*NOTE: THESE ITEMS ARE INCLUDED WITH THE ENGINE, ITEM 1. REFER TO ILLUS. 13 FOR DETAILS.

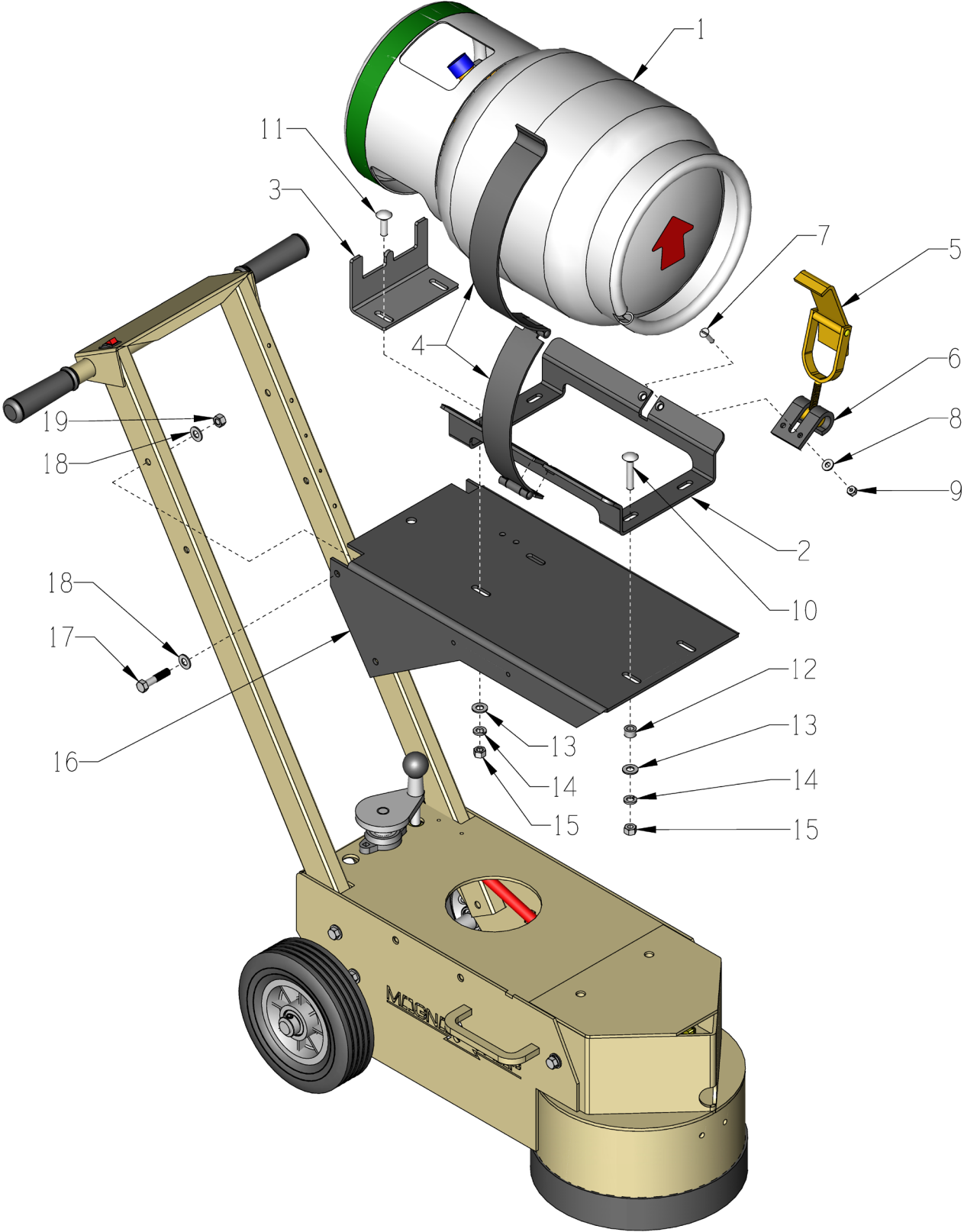
MODEL TG10-13P

**ILLUSTRATION 13:
PROPANE ENGINE GROUPING**

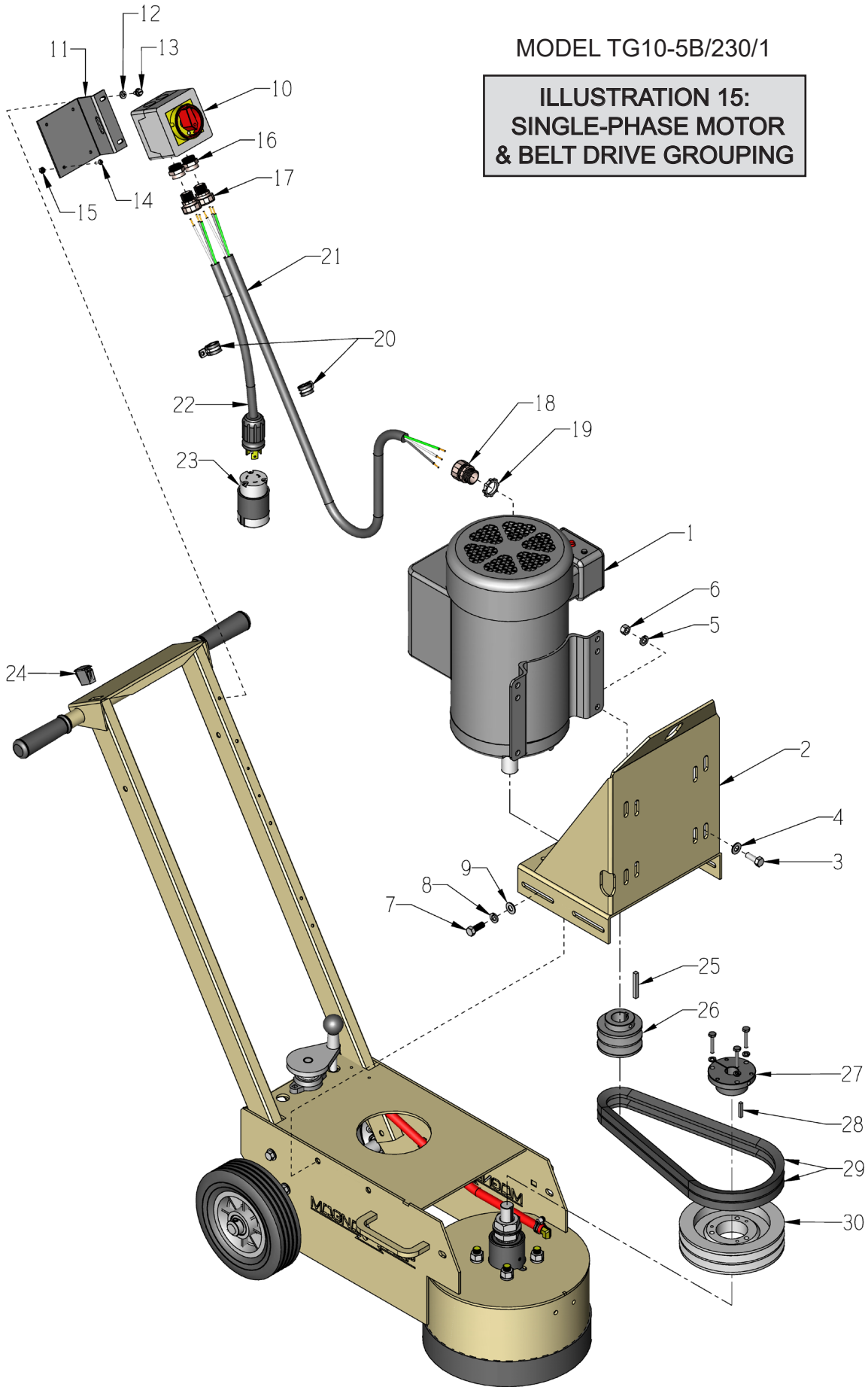


PARTS LISTING - ILLUSTRATION 13: PROPANE ENGINE GROUPING			
ITEM #	PART #	DESCRIPTION	QTY.
1	15088-P	ENGINE, HONDA GXV390 PROPANE - PUREPOWER BY AZTEC 390cc (INCLUDES ALL PARTS IN THIS ILLUSTRATION - SEE BELOW)	1
2	15088-P6	FILTER, FOAM HAT, TG10-13P	1
3	15088-P1	CATALYTIC MUFFLER, TG10-13P	1
4	15088-P16	CATALYTIC MUFFLER GASKET, TG10-13P	1
5	15088-1	STARTER 12V, HONDA GXV390UT1DE33	1
6	15088-P7	CARBURETOR ADAPTER, TG10-13P	1
7	15088-P2	KIT, REGULATOR (INCLUDES: ITEMS 8 THRU 14)	1
8	15088-P5	PROPANE VAPOR REGULATOR N-51	1
9	15088-P8	VALVE, HIGH PRESSURE SHUT-OFF	1
10	15088-P4	PROPANE HP FUEL HOSE 42", TG10-13P (TRIMMED TO APPROX. 36" TO FIT)	1
11	15095-3	QUICK DISCONNECT 1-1/4 LH ACME	1
12	15088-P9	HOSE, ENGINE LP LPG 1/2"ID X 37"	1
13	50554	BARB, PUSH-ON 1/2HOSE X 3/8MPT	1
14	10768	CLAMP, HOSE, SAE #12, ADJ. TO 1-1/4	2
15	15088-P3	SWITCH, 12V MICROVAC SAFETY 1501L	1
16	15088-P10	BARB ELBOW 90, 3/16"HOSE X 1/8MPT	1
17	15088-P11	HOSE, VACUUM 3/16"ID X 39"L	1
18	15088-P12	BATTERY 12V, XTREME XTA13-BS	1
19	15088-P15	REPLACEMENT KEY, SWITCH, TG10-13P	1
20	15088-P13	SWITCH, KEY, TG10-13P (INCLUDES 2 KEYS)	1
21	15088-P14	WIRE HARNESS, KEY SWITCH, TG10-13P	1
22	15178	METER, TACH/HOUR, INDUCTIVE	1
		PARTS NOT SHOWN - SUPPLIED W/ THE ENGINE:	
	N/A	STARTER SOLENOID	1
	N/A	CABLE: 10" SOLENOID TO STARTER	1
	N/A	CABLE: 16.5" SOLENOID TO POS. BATTERY (RED)	1
	N/A	CABLE: 26" NEG. BATTERY TO ENGINE MOUNT (BLACK)	1

ILLUSTRATION 14: PROPANE TANK GROUPING



PARTS LISTING ILLUSTRATION 14: PROPANE TANK GROUPING			
ITEM #	PART #	DESCRIPTION	QTY.
1	15099	PROPANE TANK 20LB. VAPOR	1
2	100399	PROPANE TANK CRADLE BRACKET	1
3	100400	PROPANE TANK LOCATOR BRACKET	1
4	77061-2	PROPANE TANK STRAP W/ HINGE	1
5	77061-4	PROPANE TANK TOGGLE CLAMP	1
6	77061-3	PROPANE TANK CLAW BRACKET	1
7	11661	SCREW, FLAT HD SLT 1/4-20 X 1	4
8	10602	WASHER, FLAT 1/4 SAE ZINC	4
9	10861	NUT, KEPS LOCK 1/4-20 ZINC	4
10	10804	BOLT, CARRIAGE 3/8-16 X 1-1/2	2
11	10320	BOLT, CARRIAGE 3/8-16 X 1-1/4	2
12	10011	SPACER, STEEL 5/8OD X 3/8ID X 3/8T (SEE ILLUSTRATION 12, ITEM 14)	2
13	10025	WASHER, FLAT 3/8 SAE ZINC	4
14	10811	WASHER, LOCK 3/8 ZINC	4
15	10404	NUT, HEX 3/8-16 ZINC	4
16	86708	MOUNT, PROPANE TANK, TG10-13P (SEE ILLUSTRATION 12, ITEM 12)	1
17	10029	SCREW, CAP 3/8-24 X 1-3/4	4
18	10025	WASHER, FLAT 3/8 SAE ZINC	8
19	10004	NUT, HEX LOCK 3/8-24 ZINC	4



PARTS LISTING - ILLUSTRATION 15: SINGLE-PHASE MOTOR & BELT DRIVE GROUPING			
ITEM #	PART #	DESCRIPTION	QTY.
1	81026	MOTOR, BALDOR 5HP-1PH 60HZ 3450RPM	1
		<u>REPLACEMENT PARTS:</u>	
	16121	CAPACITOR, START, BALDOR EC1161C06 (161-193 MFD, 250V)	2
	16164	CAPACITOR, RUN, BALDOR OC3040F09SP (40MFD 370V)	1
	16540	RESET BUTTON, BALDOR TPBRT25DB	1
2	86404	MOUNT, MOTOR, SEC TG10 TMC7	1
3	10021	SCREW, CAP 3/8-24 X 1	4
4	10025	WASHER, FLAT 3/8 SAE ZINC	4
5	10811	WASHER, LOCK 3/8 ZINC	4
6	10014	NUT, HEX 3/8-24 ZINC	4
7	10055	SCREW, CAP 3/8-16 X 1	4
8	10811	WASHER, LOCK 3/8 ZINC	4
9	10025	WASHER, FLAT 3/8 SAE ZINC	4
10	77043	SWITCH, ROTARY CAM ON/OFF	1
		<u>REPLACEMENT PARTS:</u>	
	77043-2	SWITCH HANDLE, PADLOCKABLE, LOVATO	1
	77043-4	GASKET RING, OPERATOR, LOVATO	1
11	77042	BRACKET, ROTARY CAM SWITCH	1
12	10846	SCREW, CAP STSHW 1/4-20 X 5/8	2
13	10038	WASHER, LOCK 1/4 ZINC	2
14	11663	SCREW, MACHINE 8-32 X 1/2 (LOCATED INSIDE OF SWITCH BOX)	4
15	10462	NUT, KEPS LOCK 8-32 ZINC	4
16	77043-1	SWITCH ADAPTER, PG16 TO 1/2"NPT	2
17	41130	STRAIN RELIEF 1/2NPT X .550-.650"	2
18	10959	STRAIN RELIEF 3/4 NPT X .550-.650"	1
19	10740	CONDUIT LOCK NUT 3/4 NP (LOCATED INSIDE JUNCTION BOX)	1
20	11565	CLAMP, LOOM, 5/8" (SAE SIZE 10)	2
21	86331	WIRE HARNESS 10/3 X 50"LOA, TG10	1
22	56321	PLUG W/ 10/3 CORD, LOCKING L6-30P	1
23	56322	CONNECTOR, LOCKING 30A/250V L6-30C	1
24	15204	PLUG, RECT. HOLE, PLASTIC SNAP-IN	1
25	N/A	KEY 1/4SQ X 1-3/4 (COMES WITH MOTOR)	1
26	79023	SHEAVE 3"OD X 2GR.B X 1-1/8"BORE	1
27	10081M	BUSHING, SHEAVE SDS X 7/8 MODIFIED	1
28	50523	KEY 3/16SQ X 1-1/8	1
29	75010	SHEAVE 6.9"OD X 2GR.B X SDS	1
30	10290	BELT B-35	1

**ILLUSTRATION 16:
THREE-PHASE MOTOR
& BELT DRIVE GROUPING**

MODELS:

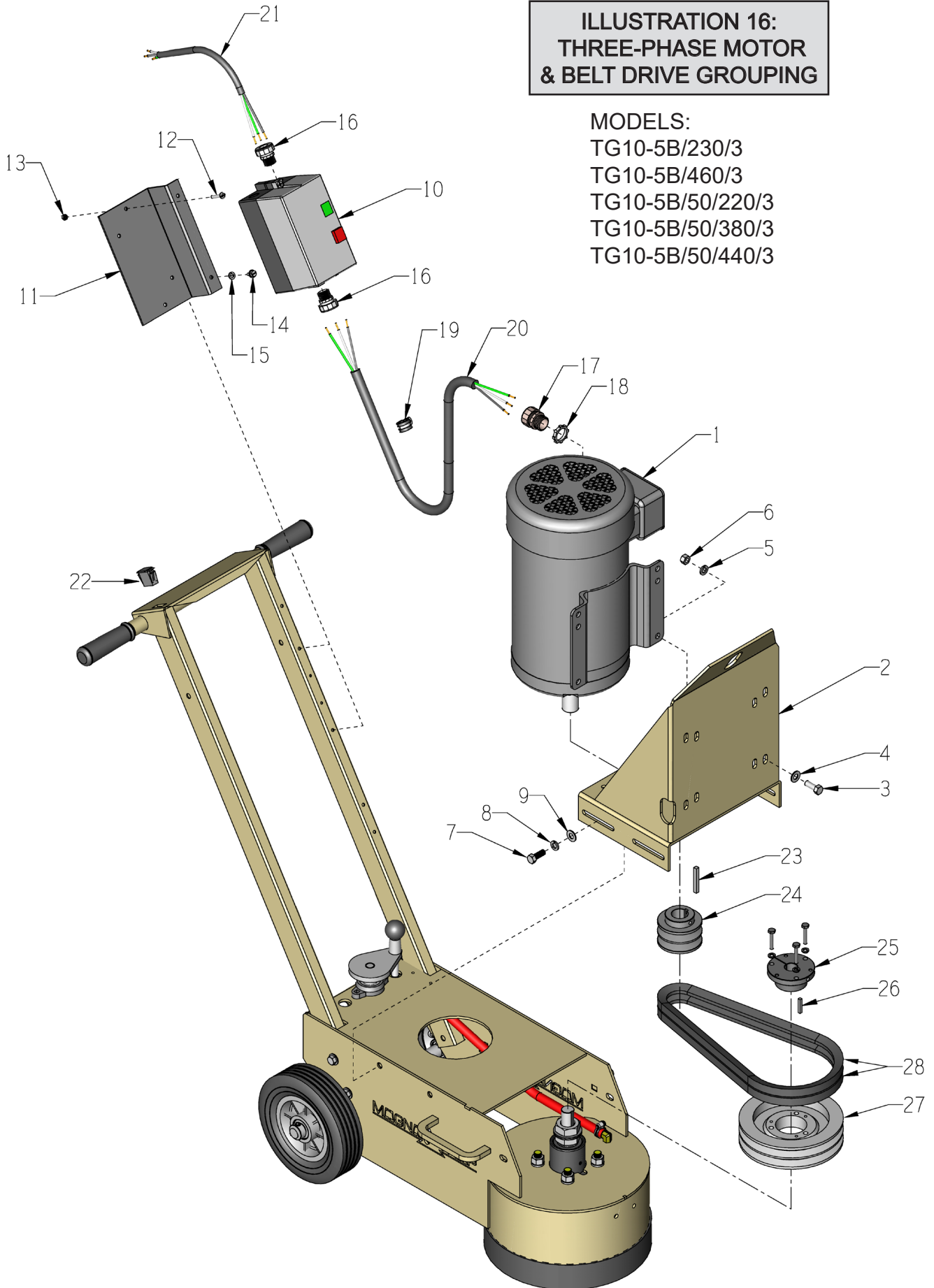
TG10-5B/230/3

TG10-5B/460/3

TG10-5B/50/220/3

TG10-5B/50/380/3

TG10-5B/50/440/3



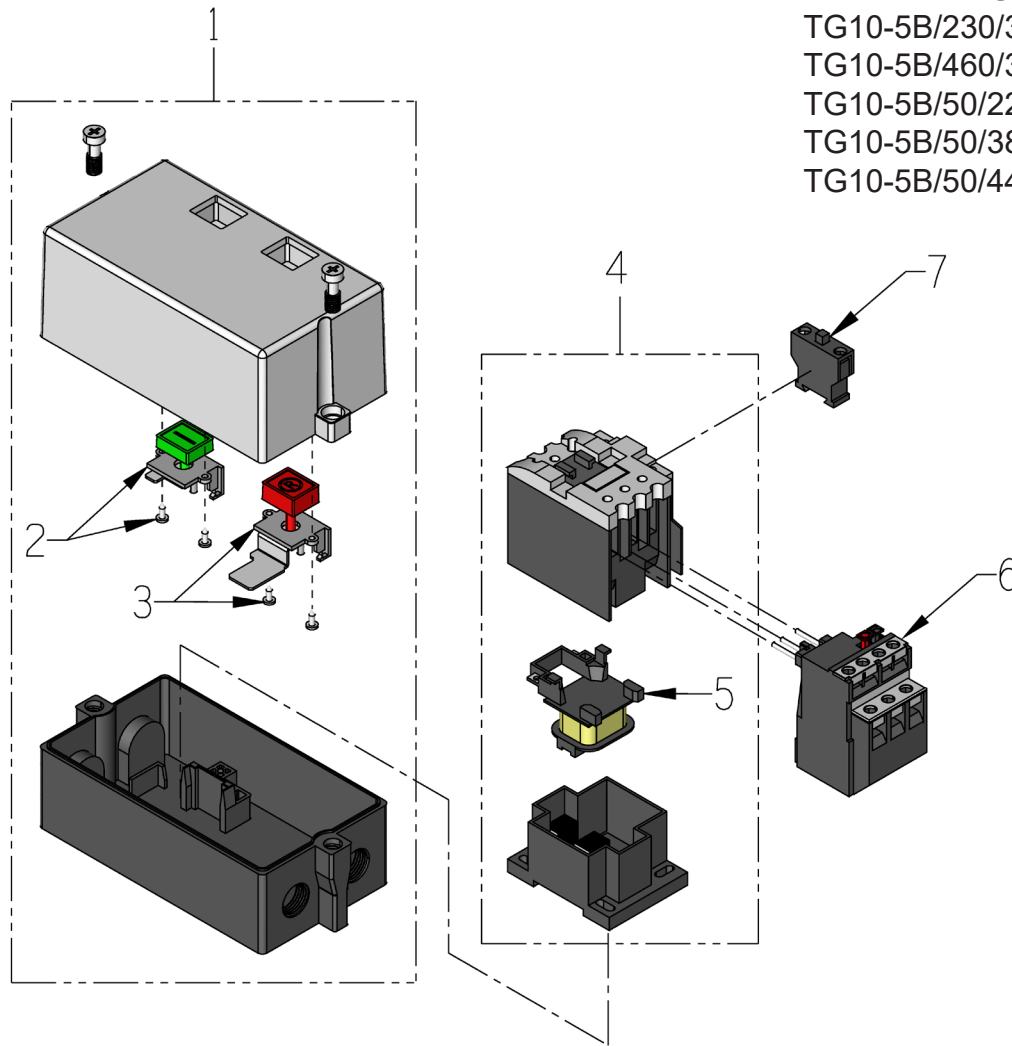
PARTS LISTING - ILLUSTRATION 16: THREE-PHASE MOTOR & BELT DRIVE GROUPING			
ITEM #	PART #	DESCRIPTION	QTY.
1	81022	MOTOR, BALDOR 5HP-3PH-60HZ-230/460V	1
	16020	MOTOR, BALDOR 5HP-3PH-50HZ-230/400V	1
2	86404	MOUNT, MOTOR, SEC TG10 TMC7	1
3	10021	SCREW, CAP 3/8-24 X 1	4
4	10025	WASHER, FLAT 3/8 SAE ZINC	4
5	10811	WASHER, LOCK 3/8 ZINC	4
6	10014	NUT, HEX 3/8-24 ZINC	4
7	10055	SCREW, CAP 3/8-16 X 1	4
8	10811	WASHER, LOCK 3/8 ZINC	4
9	10025	WASHER, FLAT 3/8 SAE ZINC	4
10	16405	STARTER ACI #128841 START-STOP 200/240V COIL 11.3-16A O/L	1
	16406	STARTER ACI #128847 START-STOP 440/480V COIL 5.5-7.5A O/L	1
	16482	STARTER ACI #128848 START-STOP 440/480V COIL 7.2-10A O/L (SEE ILLUSTRATION 17 FOR REPLACEMENT PARTS)	1
11	86027	MOUNTING BRKT., STARTER	1
12	11732	SCREW, MACHINE 10-32 X 1-3/4 RPH	2
	10384	SCREW, MACHINE 10-32 X 1 RHP	1
13	10832	NUT, KEPS LOCK 10-32 ZINC	2
14	10846	SCREW, CAP STSHW 1/4-20 X 5/8	2
15	10038	WASHER, LOCK 1/4 ZINC	2
16	41053	STRAIN RELIEF 1/2NPT X .625-.750"	2
17	10605	STRAIN RELIEF 3/4NPT X .650-.750"	1
18	10740	CONDUIT LOCK NUT 3/4 NP (LOCATED INSIDE OF JUNCTION BOX)	1
19	11565	CLAMP, LOOM, 5/8" (SAE SIZE 10)	1
20	86332	WIRE HARNESS 12/4 X 42"LOA, TG-10	1
21	86022	WIRE HARNESS 12/4 X 26"LOA	1
22	15204	PLUG, RECT. HOLE, PLASTIC SNAP-IN	1
23	N/A	KEY 1/4SQ X 1-3/4 (COMES WITH MOTOR)	1
24	79023	SHEAVE 3"OD X 2GR.B X 1-1/8"BORE	1
25	10081M	BUSHING, SHEAVE SDS X 7/8 MODIFIED (60Hz MOTOR ONLY)	1
26	50523	KEY 3/16SQ X 1-1/8	1
27	75010	SHEAVE 6.9"OD X 2GR.B X SDS (60Hz MOTOR)	1
	86344	SHEAVE 4.55"OD X 2GR.B X 7/8"BORE (50HZ MOTOR)	1
28	10290	BELT B-35 (60Hz MOTOR)	2
	10035	BELT 5L-330 OR B30 (50Hz MOTOR)	2

ILLUSTRATION 17: STARTER ASSEMBLY

REPLACEMENT PARTS

THREE-PHASE MODELS:

TG10-5B/230/3
 TG10-5B/460/3
 TG10-5B/50/220/3
 TG10-5B/50/380/3
 TG10-5B/50/440/3

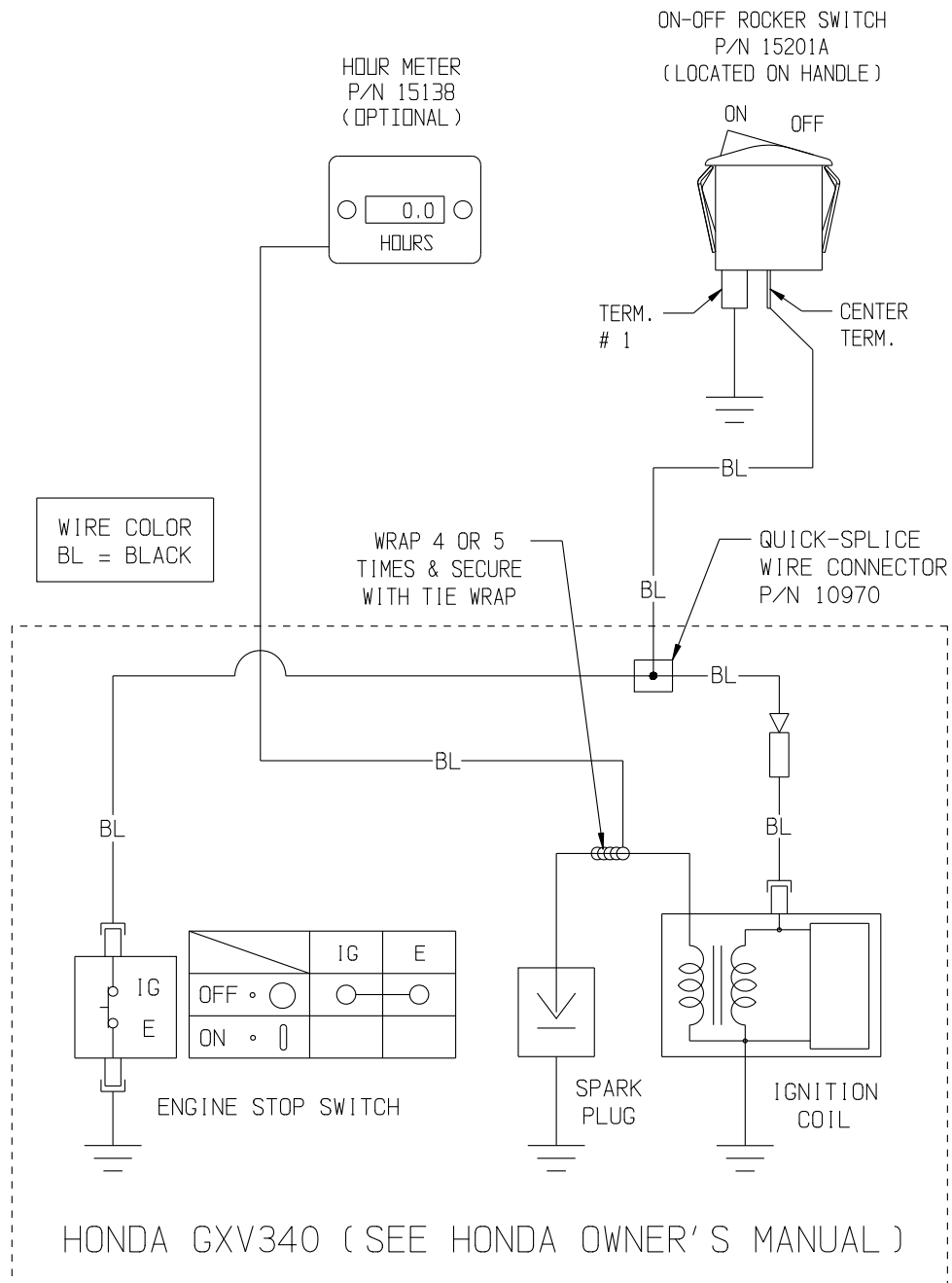


ITEM #	PART #	DESCRIPTION	QTY.
1	16652	STARTER BOX ONLY, START-STOP (INCLUDES ITEM 2 & 3)	1
2	16656	START PUSHBUTTON ASSY., GREEN	1
3	16655	STOP/RESET PUSHBUTTON ASSY., RED	1
4	16617 16618	CONTACTOR WITH COIL: (INCLUDES ITEM 5) STARTER CONT./COIL ACI SK18.310-230 (220-230V) STARTER CONT./COIL ACI SK18.310-460 (380-460V)	1
5	16622 16623	STARTER AC COIL ONLY: AC COIL 200/240V-60HZ, 190/220-50HZ AC COIL 440/480V-60HZ, 380/415-50HZ	1
6	16632 16633 16635	STARTER OVERLOAD RELAY: O/L RELAY 5.5-7.5 AMP (60Hz 460V) O/L RELAY 7.2-10.0 AMP (50Hz 380-440V) O/L RELAY 11.3-16 AMP (60Hz 230V, 50Hz 220V)	1
7	16667	START SWITCH, SS-1, ACI #132936	1

THIS PAGE LEFT BLANK INTENTIONALLY

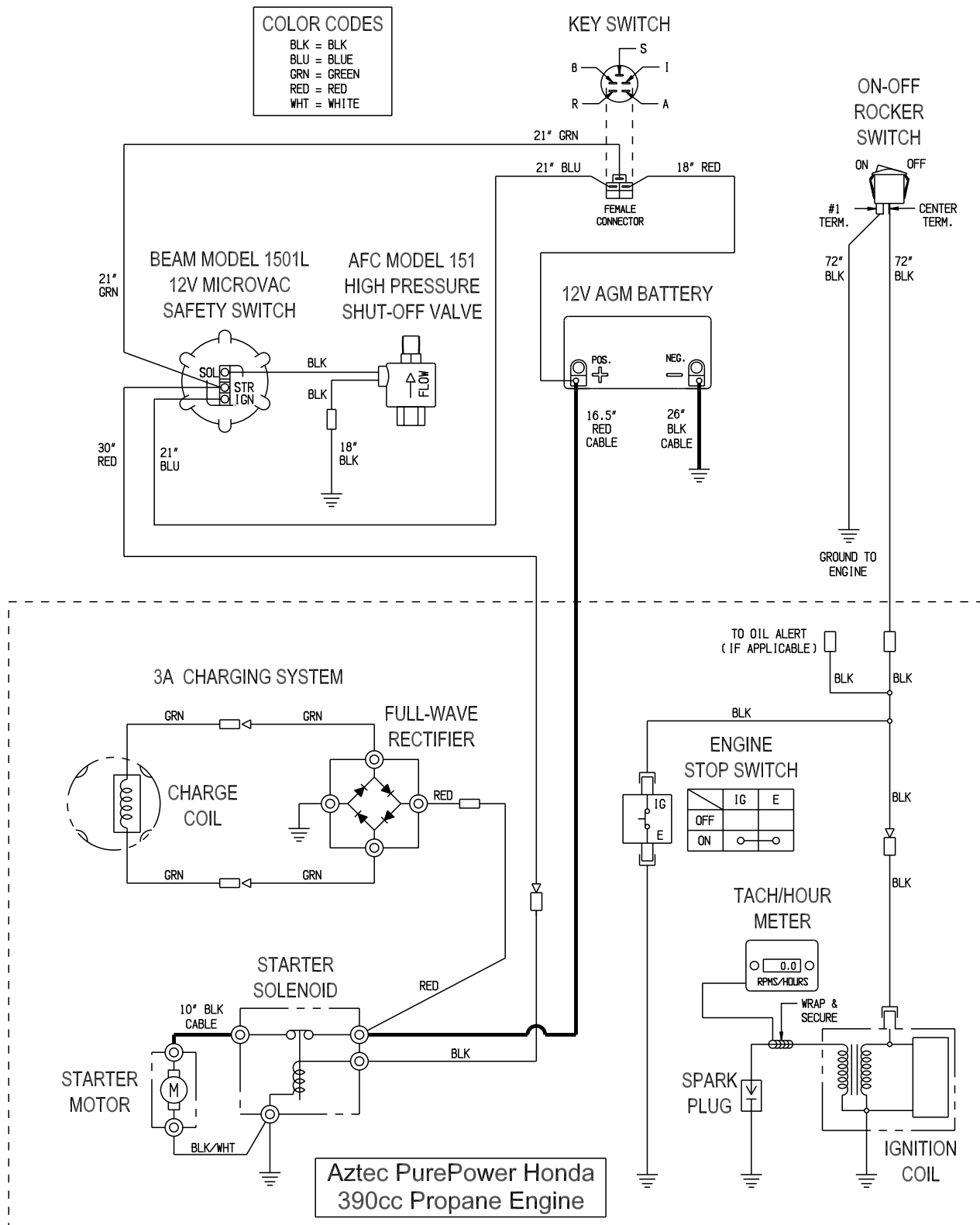
MODEL TG10-11H

WIRING DIAGRAM FOR GASOLINE MODEL

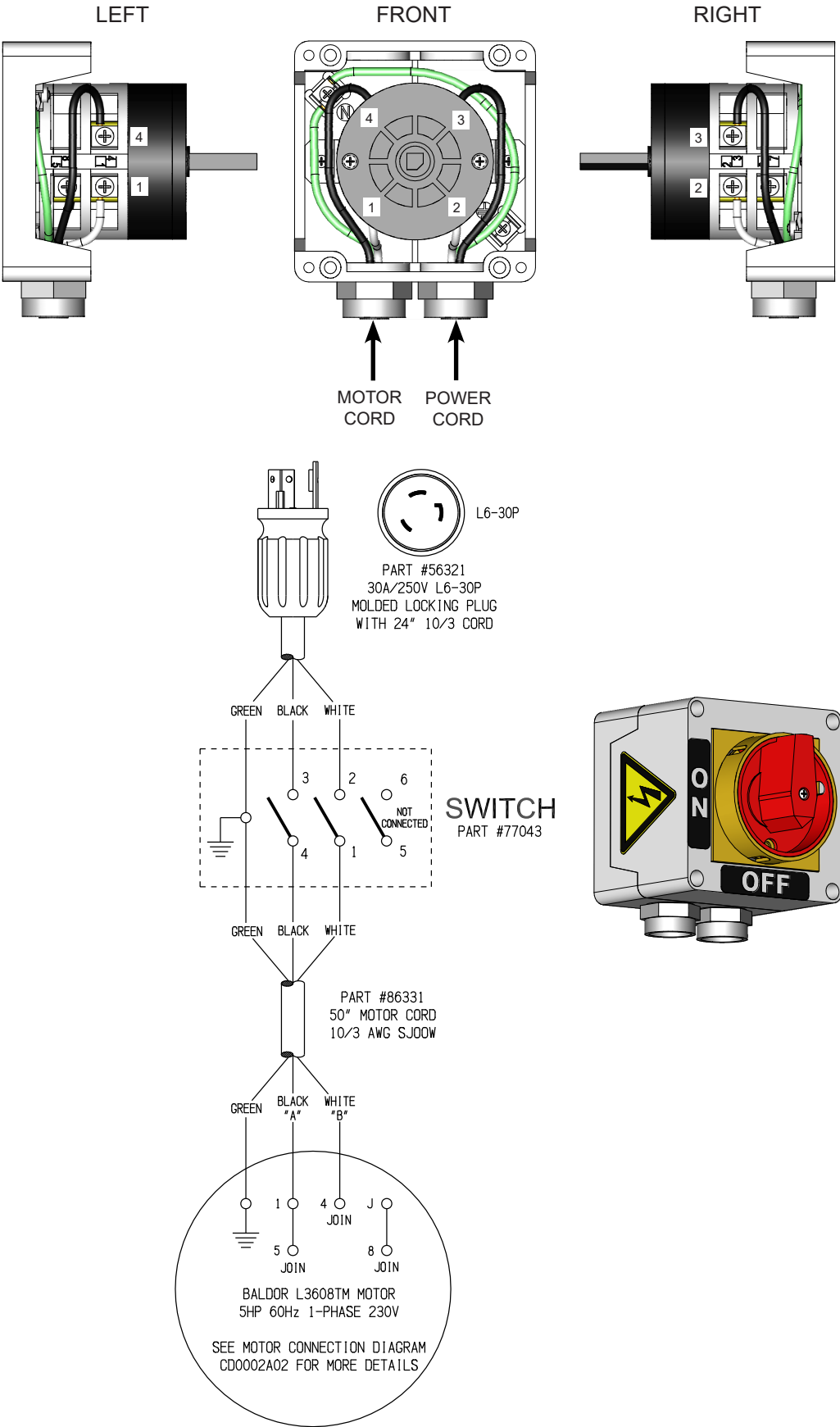


MODEL TG10-13P

WIRING DIAGRAM FOR PROPANE MODEL

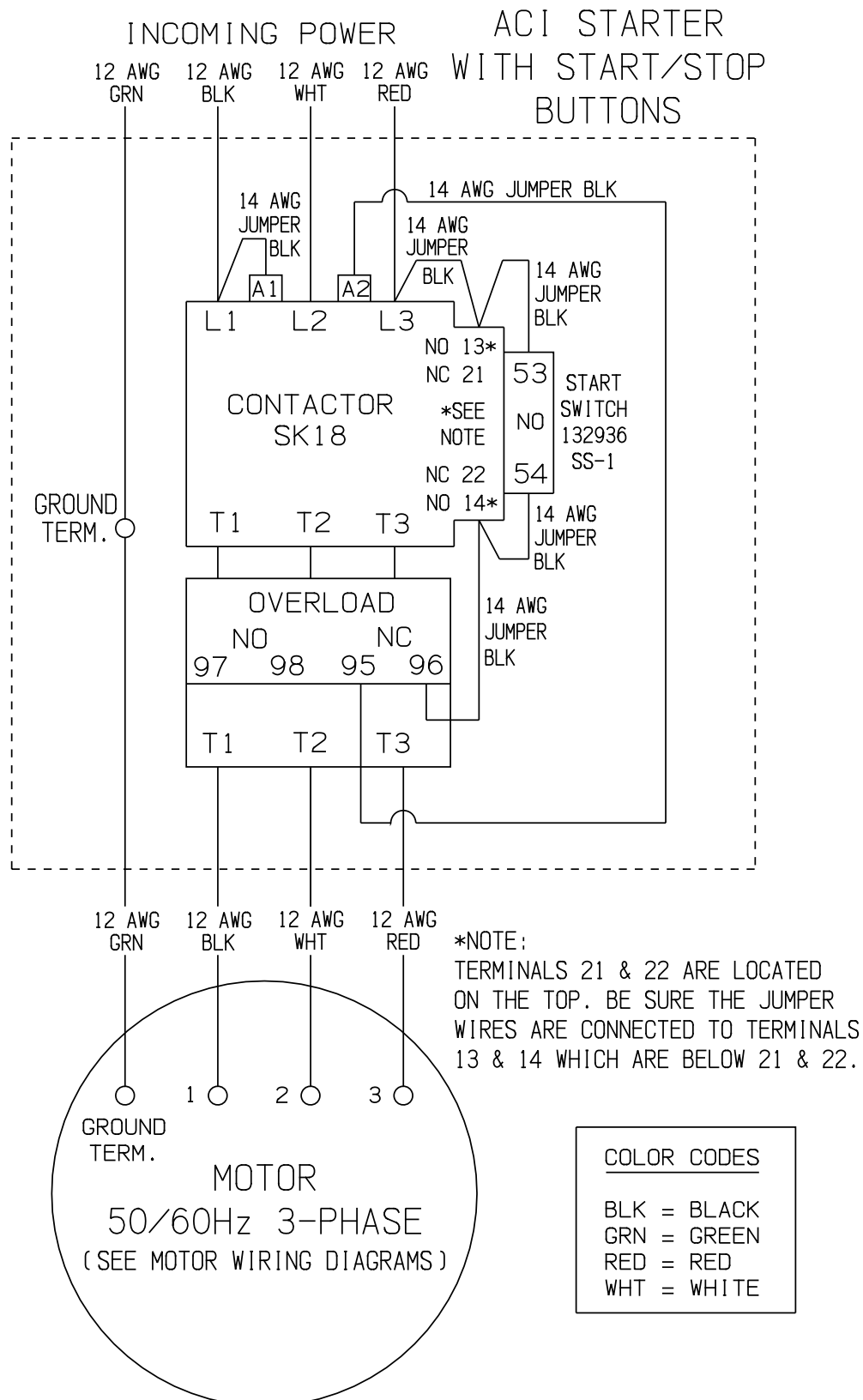


WIRING DIAGRAM FOR ROTARY CAM SWITCH (SINGLE PHASE)



MODELS: TG10-5B/230/1, TG10-5B/460/3,
TG10-5B/50/220/3, TG10-5B/50/380/3, &TG10-5B/50/440/3

WIRING DIAGRAM FOR STARTER (THREE PHASE)

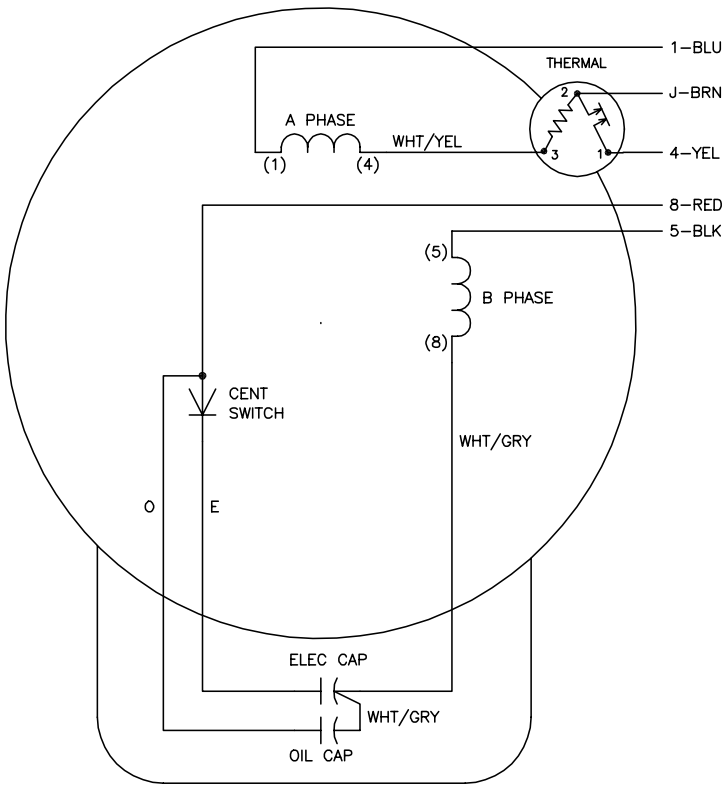


MODEL TG10-5B/230/1

WIRING DIAGRAM FOR 1 PHASE 60Hz MOTOR
BALDOR L3608TM

USE CONNECTIONS FOR OPPOSITE (OPP) ROTATION SHOWN BELOW IN CHART

CD0002A02



	LINE A	LINE B	JOIN
STD	1,8	4	J,5
OPP	1,5	4	J,8

- NOTES:
1. STANDARD ROTATION IS CCW FACING END OPPOSITE SHAFT EXTENSION.
 2. MULTIPLE CAPACITORS ARE CONNECTED IN PARALLEL UNLESS OTHERWISE SPECIFIED.
 3. LEAD COLORS ARE OPTIONAL. LEADS MUST ALWAYS BE NUMBERED AS SHOWN.

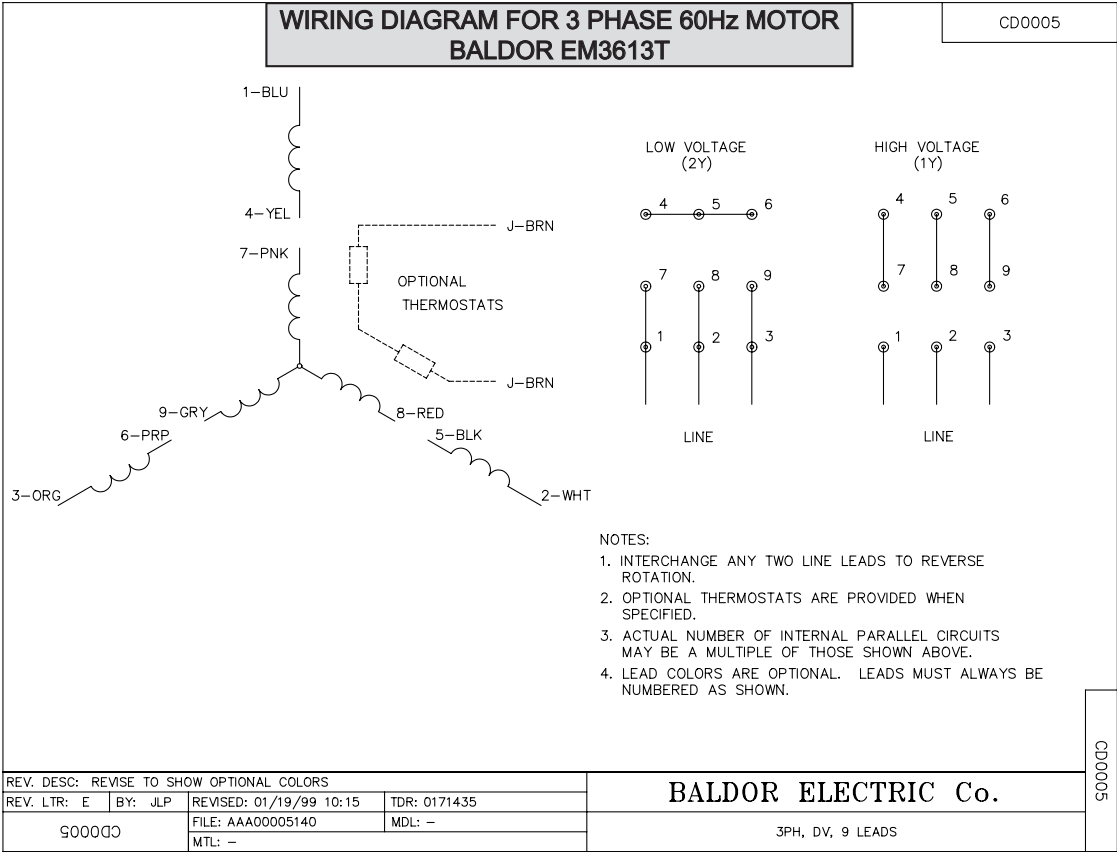
REV. DESC: REMOVE 2-TERMINAL THERMAL DETAIL, SEE CD0002A04	VERSION: 01	TDR: 000000360649
REV. LTR: D	FILE: \AAA\00007\520	REVISED: 17:11:40 04/15/2005
Z0VZ000D0	MTL: -	BY: ENJOEP0

BALDOR ELECTRIC Co.

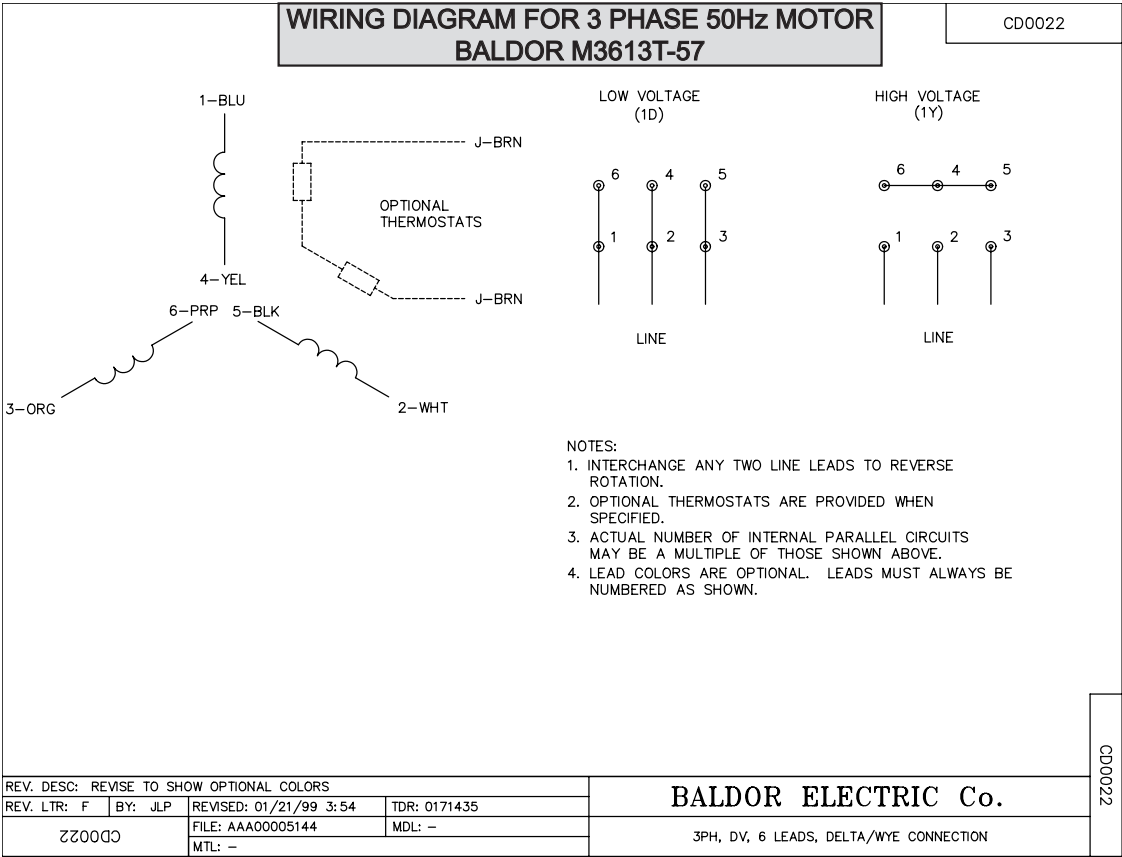
TYPE LC, SV, REV, THERMAL, 5 LEADS

CD0002A02

MODELS: TG10-5B/230/1, TG10-5B/460/3



MODELS: TG10-5B/50/220/3, TG10-5B/50/380/3, &TG10-5B/50/440/3



DECAL SHEET

P/N 92215 RevH TG-10 14 x 17 SHEET

RENTAL-TOUGH®

CHECK OIL DAILY



exceeds 85dBA

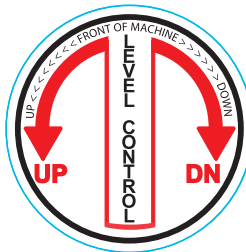
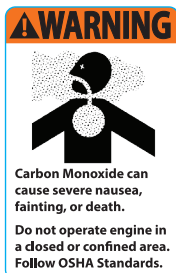


CAUTION

GENERATOR SIZE REQUIREMENT
RATE GENERATOR AT 3 TIMES
MOTOR RATED HORSEPOWER



THROTTLE

**WARNING**THERE IS NO OIL IN THIS MACHINE

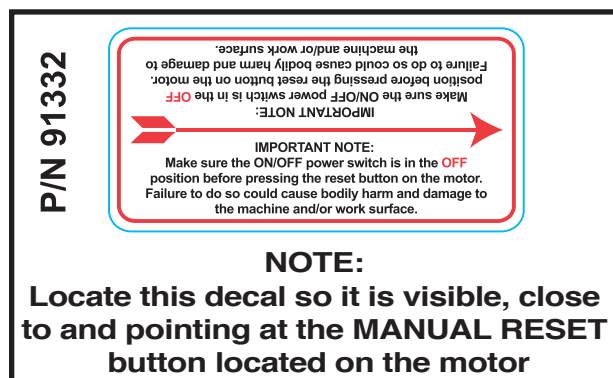
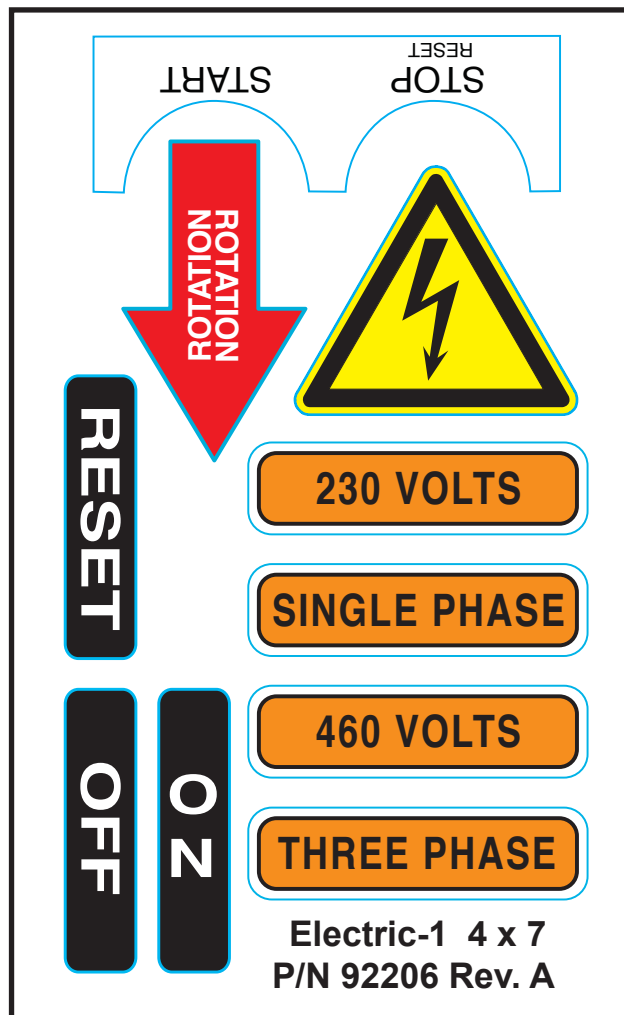
GREASE BEARINGS

DAILY



WARNING: Cancer and Reproductive Harm.
For more information, go to www.P65Warnings.ca.gov

DECALS CONTINUED



NOTES

Record here any repairs or changes made to the Equipment

LIMITED EQUIPMENT WARRANTY OF SALE

Equipment Development Company, Inc. herein referred to as EDCO (Seller) warrants that each new unit manufactured by EDCO to be free from defects in material and workmanship in normal use and service for a period of (1) one year (except for the cutter drum assembly on all model concrete/asphalt planers AND the chisel head assembly on all model ALR's & ALR-BS in which case the warranty period shall be 90 days) from date of shipment to the original retail or equipment rental center owner.

Accessories or equipment furnished and installed on the product by EDCO but manufactured by others, including, but not limited to engines, motors, electrical components, transmissions etc., shall carry the accessory manufacturers own warranty.

EDCO will, at its option, repair or replace, at the EDCO factory or at a point designated by EDCO, any part which shall appear to the satisfaction of EDCO inspection to have been defective in material or workmanship.

EDCO reserves the right to modify, alter and improve any part or parts without incurring any obligation to replace any part or parts previously sold without such modified, altered or improved part or parts.

This warranty is in lieu of and excludes all other warranties, expressed, implied, statutory, or otherwise created under applicable law including, but not limited to the warranty of merchantability and the warranty of fitness for a particular purpose in no event shall seller or the manufacturer of the product be liable for special, incidental, or consequential damages, including loss of profits, whether or not caused by or resulting from the negligence of seller and/or the manufacturer of the product unless specifically provided herein. In addition, this warranty shall not apply to any products or portions thereof which have been subjected to abuse, misuse, improper installation, maintenance, or operation, electrical failure or abnormal conditions and to products which have been tampered with, altered, modified, repaired, reworked by anyone not approved by seller or used in any manner inconsistent with the provisions of the above or any instructions or specifications provided with or for the product.

TERMS AND CONDITIONS

(NOT APPLICABLE TO SALES THROUGH AUTHORIZED DISTRIBUTION)

FORCE MAJEURE

Seller's obligation hereunder are subject to, and Seller shall not be held responsible for, any delay or failure to make delivery of all or any part of the Product due to labor difficulties, fires, casualties, accidents, acts of the elements, acts of God, transportation difficulties, delays by a common carrier, inability to obtain Product, materials or components or qualified labor sufficient to timely perform part of or all of the obligations contained in these terms and conditions, governmental regulations or actions, strikes, damage to or destruction in whole or part of manufacturing plant, riots, terrorist attacks or incidents, civil commotions, warlike conditions, flood, tidal waves, typhoon, hurricane, earthquake, lightning, explosion or any other causes, contingencies or circumstances within or without the United States not subject to the Seller's control which prevent or hinder the manufacture or delivery of the Products or make the fulfillment of these terms and conditions impracticable. In the event of the occurrence of any of the foregoing, at the option of Seller, Seller shall be excused from the performance under these Terms and Conditions, or the performance of the Seller shall be correspondingly extended.

This document sets forth the terms and conditions pursuant to which the purchaser ("Purchaser") will purchase and Equipment Development Co. Inc. ("Seller") will sell the products, accessories, attachments (collectively the Products) ordered by the Purchaser. These terms and conditions shall govern and apply to the sale of Seller's Products to Purchaser, regardless of any terms and conditions appearing on any purchase order or other forms submitted by Purchaser to Seller, or the inconsistency of any terms therein and herein.

1. PRICE

All prices set forth on any purchase order or other document are F.O.B. Seller's facility or distribution point, as may be determined by Seller (F.O.B. Point). All prices are exclusive of any and all taxes, including, but not limited to, excise, sales, use, property or transportation taxes related to the sale or use of the Products, now or hereafter imposed, together with all penalties and expenses. Purchaser shall be responsible for collecting and/or paying any and all such taxes, whether or not they are stated in any invoice for the Products. Unless otherwise specified herein, all prices are exclusive of inland transportation, freight, insurance and other costs and expenses relating to the shipment of the Products from the F.O.B. point to Purchaser's facility. Any prepayment by Seller of freight insurance and other costs shall be for the account of Purchaser and shall be repaid to Seller.

2. PAYMENT TERMS

Payment terms are as follows. 2% 10 days (to approved and qualified accounts). Net 30 days. This is a cash discount for invoices paid within 10 days after the invoice date, regardless of date of receipt of shipment. This is not a trade discount and will not be granted to accounts that do not adhere to stated terms.

*All past due accounts are subject to a late payment fee of 1.5% per month or a maximum allowed by law if different, along with the expenses incidental to collection including reasonable attorney's fees and costs.

*Seller reserves the right to hold shipments against past due accounts.

*Seller reserves the right to alter payment terms.

3. FREIGHT TERMS

All shipments will be made F.O.B. shipping point as designated in these Terms and Conditions, and title shall pass at the F.O.B. point. Delivery to the initial common carrier shall constitute delivery to the Purchaser. Any claims for loss or damage during shipment are to be filed with carrier by the Purchaser. Seller will not assume responsibility for the performance of the carrier.

Back orders will be shipped in the most practical fashion with charges consistent with our freight policy established with the original order. UPS, FED EX, MAIL or shipments by other couriers are subject to the same terms and conditions as outlined in paragraph #3 "Freight Terms".

4. DELIVERY, DAMAGES, SHORTAGES

Seller shall use reasonable efforts to attempt to cause the Products to be delivered as provided for in these Terms & Conditions. Delivery to the initial common carrier shall constitute the delivery to the Purchaser. Seller's responsibility, in so far as transportation risks are concerned ceases upon the delivery of the Products in good condition to such carrier at the F.O.B. point and all the Products shall be shipped at the Purchaser's risk. Seller shall not be responsible or liable for any loss of income and/or profits, or incidental, special, consequential damages resulting from Seller's delayed performance in shipment and delivery.

5. RETURN OF DEFECTIVE PRODUCTS

Defective or failed material shall be held at the Purchaser's premises until authorization has been granted by Seller to return or dispose of Products. Products that are to be returned for final inspection must be returned Freight Prepaid in the most economical way. Credit will be issued for material found to be defective upon Seller's inspection based on prices at time of purchase.

6. PRODUCTS ORDERED IN ERROR

Products may be returned, provided that claim is made and Seller is notified within 7 days of receipt of Products, and the Products are in original buyer's possession not more than 30 days prior to return, subject to Seller's approval. If Products are accepted for return, they must be Freight Prepaid and buyer will be charged a minimum of 15% restocking charge, plus a charge back for outbound freight charges if the original order was shipped prepaid. Returns are not accepted for any Products that are specifically manufactured to meet the buyer's requirement of either specifications or quantity.

AGREEMENTS

These Terms and Conditions constitute the entire agreement between Seller and Purchaser as it relates to terms and conditions of sale, and supersedes any and all prior oral or written agreements, correspondence, quotations or understandings heretofore in force between the parties relating to the subject matter hereof. There are no agreements between Seller and Purchaser with respect to the Product herein except those specifically set forth in and made part of these terms and conditions. Any additional terms, conditions and/or prices are rejected by Seller.

These terms and conditions may be modified, cancelled or rescinded only by a written agreement of both parties executed by their duly authorized agents.

USE ONLY GENUINE EDCO PARTS & ACCESSORIES

For your own safety, the safety of others and the life of your machine.

SUBMIT ALL WARRANTY CLAIMS AT:

edcoinc.com/customer-support/warranty-claim-form/



BEFORE USING THIS PRODUCT

Have You Used EDCO's Online Customer Support??



Scan This QRC or Visit
www.edcoinc.com/customer-support



READ: EDCO Owner's Manuals and Parts Listings share basic information and parts of each product. Download and print them whenever needed.



WATCH: EDCO Product Training Videos show how to use products, install tooling, and perform basic maintenance.



Example Only

FIND: Somewhere on this product is an **EDCO QRC Training Decal**. Scanning this code provides owner's information, videos, and other training content anywhere/anytime on your mobile device.



JOIN: EDCOed.com is a free, 24-hour training space. Each certification track focuses on a specific EDCO product group. The information in these tracks help businesses be successful with those products.

EDCO is always updating online training / information so you always have the most recent content.

Also see Operator's Safety & Limited Warranty Manual

Equipment Development Co., Inc. • 800.638.3326 • techsupport@edcoinc.com